

Key Vocabulary

mass

gram

kilogram

capacity

volume

millilitre

litre

millimetre

centimetre

kilometre

foot

inch

ounce

pound

stone

pint

gallon

Converting Mass

$$1 \text{ tonne} = 1000\text{kg}$$

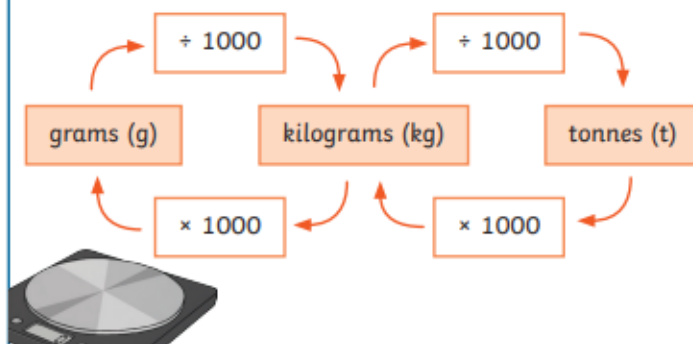
$$1000\text{g} = 1\text{kg}$$

$$\frac{1}{10} \text{ kg} = 0.1\text{kg} = 100\text{g}$$

$$\frac{1}{4} \text{ kg} = 0.25\text{kg} = 250\text{g}$$

$$\frac{1}{2} \text{ kg} = 0.5\text{kg} = 500\text{g}$$

$$\frac{3}{4} \text{ kg} = 0.75 = 750\text{g}$$



Converting Capacity

$$1000\text{ml} = 1\text{l}$$

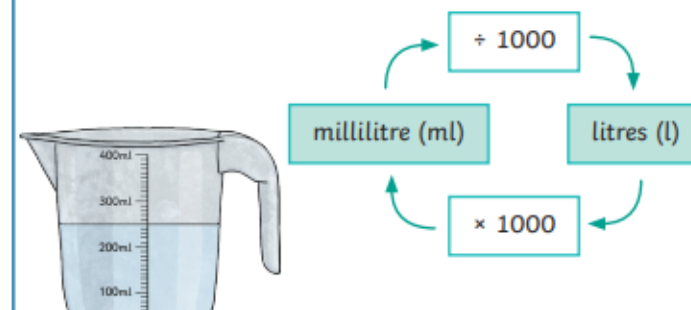
$$\frac{1}{10} \text{ l} = 0.1\text{l} = 100\text{ml}$$

$$\frac{1}{4} \text{ l} = 0.25\text{l} = 250\text{ml}$$

$$\frac{1}{2} \text{ l} = 0.5\text{l} = 500\text{ml}$$

$$\frac{3}{4} \text{ l} = 0.75\text{l} = 750\text{ml}$$

$$\frac{1}{100} \text{ l} = 0.01\text{l} = 10\text{ml}$$



Converting Length

$$1000\text{m} = 1\text{km}$$

$$100\text{cm} = 1\text{m}$$

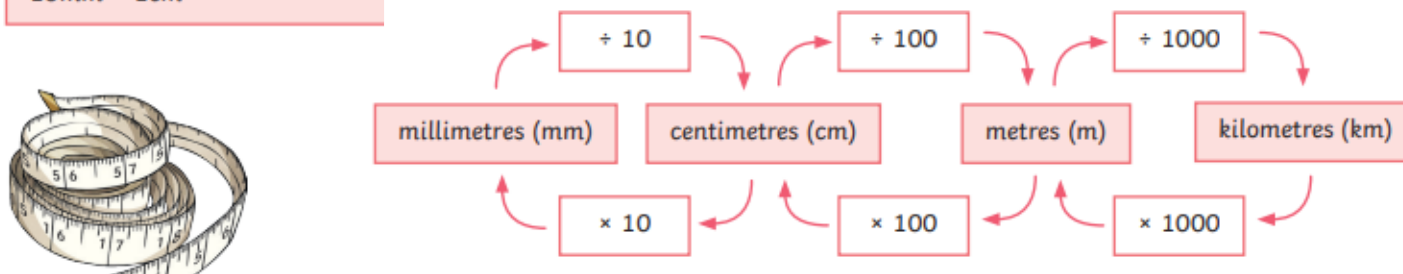
$$10\text{mm} = 1\text{cm}$$

$$\frac{1}{2} \text{ m} = 0.5\text{m} = 50\text{cm}$$

$$\frac{1}{4} \text{ m} = 0.25\text{m} = 25\text{cm}$$

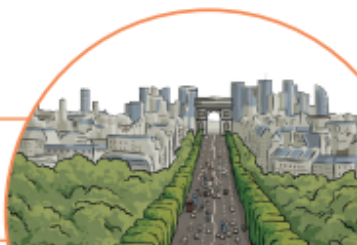
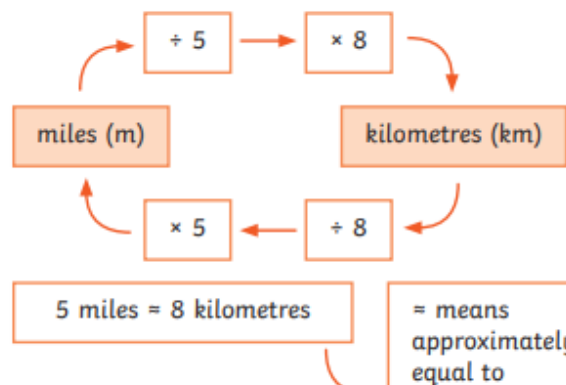
$$\frac{3}{4} \text{ m} = 0.75\text{m} = 75\text{cm}$$

$$\frac{1}{10} \text{ m} = 0.1\text{m} = 10\text{cm}$$



Miles to Kilometres

You might measure the length of a road or the distance between two cities in miles or kilometres.



Time

Minute 1 minute = 60 seconds

Hour 1 hour = 60 minutes

Day 1 day = 24 hours

Week 1 week = 7 days

Year 1 year = 12 months = 52 weeks = 365 days



Imperial Measures

Things that could be measured using imperial units:

- Someone's height in feet and inches
- The mass of a bag of sugar in ounces
- The mass of a sack of potatoes in pounds
- A person's mass in stones
- A carton of milk in pints
- The amount of water in a bath in gallons

1 foot = 12 inches
1 pound = 16 ounces
1 stone = 14 pounds
1 gallon = 8 pints

Metric to Imperial Conversions

metric (new)	imperial (old)
2.5 centimetres	1 inch
1 kilogram	2.2 pounds
4.5 litres	1 gallon

