

THE STOKE POGES SCHOOL

Child Protection and Safeguarding Policy

Governors Committee Responsible for the Policy	Full Governing Board
Date Approved	September 2020
Recommended Review Period	One year
Date for Review	September 2021
Person Responsible for the Policy	Headteacher

1. Contact information

School contacts

Headteacher / Designated Safeguarding Lead (DSL)	Liz Astley (01753 643319)
Deputy Designated Safeguarding Lead	Amanda Benians
Chair of Governors / Nominated Safeguarding Governor	Ed Bramley-Harker

Contacts in County

Education Safeguarding Advisory Service ESAS offers support to education providers to assist them to deliver effectively on all aspects of their safeguarding responsibilities.	01296 382912
First Response Team (including Early Help, Channel) The First Response Team process all new referrals to social care, including children with disabilities. Referrals are assessed by the team to check the seriousness and urgency of the concerns and whether Section 17 and/or Section 47 of the Children Act 1989 apply. The First Response Team will ensure that the referral reaches the appropriate team for assistance in a quick and efficient manner.	01296 383962 Out of hours 0800 999 7677
Local Authority Designated Officer (LADO) The Buckinghamshire Local Authority Designated Officer (LADO) is responsible for overseeing the management of all allegations against people in a position of trust who work with children in Buckinghamshire on either a paid or voluntary basis	01296 382070
Bucks Family Information Service Information for families on a range of issues including childcare, finances, parenting and education	01296 383065
Buckinghamshire Safeguarding Children Partnership (BSCP) Procedures, policies and practice guidelines	
Schools Web School bulletin, Safeguarding links, A-Z guide to information and services	
BCC Equalities & School Improvement Manager	01296 382461
BCC Prevent Co-ordinator	01296 674784
Thames Valley Police	101 (999 in case of emergency)

Other contacts

Channel helpline	020 7340 7264
NSPCC NSPCC	0800 800 5000
Childline	0800 11 11

Childline	
Kidscape – Parent Advice Line (bullying) (Mon-Weds from 9:30am to 2:30pm) Kidscape	020 7823 5430
Female Genital Mutilation Helpline (NSPCC) NSPCC FGM Helpline	0800 028 3550 fgmhelp@nspcc.org.uk
Samaritans - Helpline Samaritans	116 123
Forced Marriages Unit - Foreign and Commonwealth Office Forced marriage - GOV.UK	020 7008 0151 fm@fco.gov.uk
Crimestoppers Crimestoppers	0800 555 111
R-U Safe? Barnardos - Children/Young People Sexual Exploitation Service Barnardos RUSafe Bucks	01494 785 552
CEOP (Child Exploitation and Online Protection)	

This policy should be read in conjunction with the following policies:

- Anti-bullying
- Attendance
- Behaviour
- Children Looked After
- Equalities
- Lettings
- SEN/Inclusion
- Health & Safety (including managing children with medical needs)
- E-Safety (including use of social media)
- Staff Code of Conduct
- PSHE - to include RE & RSE
- Visitors
- Whistleblowing
- Safer Recruitment
- Social Media

2. Introduction

At The Stoke Poges School we believe that a policy on child protection is founded on the right of all children to be safe and feel safe, and that it is the fundamental obligation on all schools to robustly secure this right.

The aim of this policy is to provide staff, governors and volunteers with the framework they need to keep children in The Stoke Poges School safe and secure and to provide parents and carers with the information about how we will safeguard their children whilst in our care.

This policy is based on the Department for Education's statutory guidance Keeping Children Safe in Education (2020), [Working Together To Safeguard Children July 2018](#) and the Governance Handbook. We comply with this guidance and the arrangements agreed and published by our 3 local safeguarding partners.

This policy is also based on the following legislation:

- [The School Staffing \(England\) Regulations 2009](#), which set out what must be recorded on the single central record and the requirement for at least one person conducting an interview to be trained in safer recruitment techniques
- [The Children Act 1989](#) (and [2004 amendment](#)), which provides a framework for the care and protection of children
- Section 5B(11) of the Female Genital Mutilation Act 2003, as inserted by section 74 of the [Serious Crime Act 2015](#), which places a statutory duty on teachers to report to the police where they discover that female genital mutilation (FGM) appears to have been carried out on a girl under 18
- [Statutory guidance on FGM](#), which sets out responsibilities with regards to safeguarding and supporting girls affected by FGM
- [The Rehabilitation of Offenders Act 1974](#), which outlines when people with criminal convictions can work with children

- Schedule 4 of the [Safeguarding Vulnerable Groups Act 2006](#), which defines what ‘regulated activity’ is in relation to children
- [Statutory guidance on the Prevent duty](#), which explains schools’ duties under the Counter-Terrorism and Security Act 2015 with respect to protecting people from the risk of radicalisation and extremism
- The [Childcare \(Disqualification\) and Childcare \(Early Years Provision Free of Charge\) \(Extended Entitlement\) \(Amendment\) Regulations 2018](#) (referred to in this policy as the “2018 Childcare Disqualification Regulations”) and [Childcare Act 2006](#), which set out who is disqualified from working with children
- This policy also meets requirements relating to safeguarding and welfare in the [statutory framework for the Early Years Foundation Stage](#).
- Information Sharing Guidance for Safeguarding Practitioners [Information Sharing Guidance](#) – DfE July 2018
- Children Missing Education; Statutory Guidance for Local Authorities - Sept 2016 Children missing education - GOV.UK
- Statutory Guidance issued under section 29 of the Counter-Terrorism and Security Act - 2015 [Prevent Duty Guidance](#)
- Sexual Violence and Sexual Harassment between Children in Schools and Colleges – May 2018 Sexual Violence and Sexual Harassment between Children in Schools and Colleges
- The Equality Act - 2010 Equality Act 2010: guidance - GOV.UK
- The United Nations Convention on the Rights of the Child (UNCRC) United Nations Convention on the Rights of the Child
- What to do if you’re worried a child is being abused - March 2015 What to do if you are worried a child is being abused

We believe clear governance and leadership is central to embedding a safeguarding culture. The Governing Board takes its responsibility seriously under **section 175 of the Education Act 2002** to safeguard and promote the welfare of children; working together with other agencies to ensure adequate arrangements are in place within our school to identify, assess, and support those children who are suffering harm or whose welfare may be in question. Governors will ensure all staff at the school have read and understood their responsibilities pertaining to **Part 1 and Annexe A of Keeping Children Safe in Education, Sept 2020**. They must ensure that there is an auditable system in place to evidence this.

All staff are required to read and adhere to the **Staff Code of Conduct** that governs behaviours expected of them, as well as understanding the **Behaviour Policy** for children and our **Attendance Policy**.

We recognise all staff and Governors have a full and active part to play in protecting our pupils from harm, actively promoting their welfare and ensuring that every child’s welfare is our paramount concern. Each member of staff is responsible for contributing to a positive culture of safeguarding in The Stoke Poges School.

All staff believe our school must provide a safe, caring, positive and stimulating environment that promotes the social, physical and moral development of the individual children.

The school recognises that as well as threats to the welfare of children from within their families, children may be vulnerable to abuse or exploitation outside their homes and from other children. Staff must remain vigilant and alert to these potential risks.

The aims of this policy are:

- To support pupils’ development in ways that will foster security, confidence and resilience, free from discrimination
- To provide an environment in which children feel safe, secure, valued and respected
- Children feel confident that they know how to approach adults if they are in difficulties
- To ensure all teaching staff, non-teaching staff and volunteers:
 - are aware of the need to safeguard and promote the wellbeing of children
 - identify the need for support early to promote well-being
 - promptly report cases of actual or suspected abuse, in line with guidance from the Buckinghamshire Threshold Document
 - are trained to recognise signs and indicators of potential abuse
- To provide a systematic means of monitoring children known to be or thought to be at risk of harm and ensure contribution to assessments of need and support plans for those children
- To acknowledge the need for effective and appropriate communication, ensuring staff know how and when to share information to protect children in a way that is legal, ethical and timely
- To ensure The Stoke Poges School has a clear system for communicating concerns and a model for open communication between children, teachers, parents/carers and other adults working with children
- To have a clearly understood structured procedure within the school which will, in cases of suspected abuse, be promptly followed by all members of the school community

- To ensure the school has robust systems in place to accurately record safeguarding and child protection concerns, which are clearly understood by staff and adhered to. Actions taken to address concerns and outcomes achieved are dealt with in a timely manner, clearly and accurately recorded. These records are securely stored
- To develop effective working relationships with all other agencies involved in safeguarding, supporting the needs of children at our school
- To ensure that all staff appointed have been through the safer recruitment process and understand the principles of safer working practices as set out in our **Staff Code of Conduct**, which stipulates their duty to report where behaviours of colleagues may have stepped outside of agreed safe practices. All staff must work to develop a positive culture of safeguarding in our school
- To provide clarity to other community users of our facilities with regard to our expectations of how they should maintain a safe environment, which supports children's welfare and development. We reserve the right to decline access to use the school facilities where we believe their ethos or practice is not aligned with this policy

This policy is published on our website and hard copies are available from the school office.

3. Definitions

Safeguarding and promoting the welfare of children means:

- Protecting children from maltreatment
- Preventing impairment of children's mental and physical health or development
- Ensuring that children grow up in circumstances with the provision of safe and effective care
- Acting to enable all children to have the best outcomes

Child protection is part of this definition and refers to activities undertaken to prevent children suffering, or being likely to suffer, significant harm.

Abuse is a form of maltreatment of a child, and may involve inflicting harm or failing to act to prevent harm. Appendix 1 explains the different types of abuse.

Neglect is a form of abuse and is the persistent failure to meet a child's basic physical and/or psychological needs, likely to result in the serious impairment of the child's health or development. Appendix 1 defines neglect in more detail.

Sexting (also known as youth produced sexual imagery) is the sharing of sexual imagery (photos or videos) by children.

Children includes everyone under the age of 18.

The following 3 **safeguarding partners** are identified in Keeping Children Safe in Education (and defined in the Children Act 2004, as amended by chapter 2 of the Children and Social Work Act 2017). They will make arrangements to work together to safeguard and promote the welfare of local children, including identifying and responding to their needs:

- The local authority (LA)
- A clinical commissioning group for an area within the LA
- The chief officer of police for a police area in the LA area

4. Equality Statement

Some children have an increased risk of abuse, and additional barriers can exist for some children with respect to recognising or disclosing it. We are committed to anti-discriminatory practice and recognise children's diverse circumstances. We ensure that all children have the same protection, regardless of any barriers they may face.

We give special consideration to children who:

- Have special educational needs (SEN) or disabilities
- Are young carers
- May experience discrimination due to their race, ethnicity, religion, gender or sexuality
- Have English as an additional language
- Are known to be living in difficult situations e.g. temporary accommodation or where there are issues such as substance abuse or domestic violence
- Are at risk of FGM, sexual exploitation, forced marriage, or radicalisation
- Are asylum seekers

- Are at risk due to either their own or a family member's mental health needs
- Are looked after or previously looked after

In line with the **Equalities Act 2010**, our **Equalities and Cohesion Policy** addresses all forms of discriminatory incidents. It considers the guidance offered by the Buckinghamshire guidance document 'Equally Safe – Dealing with Prejudice Related Incidents Guidance for Schools'.

5. Responsibilities

All staff, visitors and volunteers understand safeguarding children is **everyone's responsibility** and that they must be diligent to help secure children's safety and wellbeing.

All Staff

All staff will be aware of:

- Our systems which support safeguarding, including the child protection and safeguarding policy, the staff code of conduct, the role and identity of the designated safeguarding lead (DSL) and deputy, the behaviour policy, and the safeguarding response to children who go missing from education
- The early help process and their role in it, including identifying emerging problems, liaising with the DSL, and sharing information with other professionals to support early identification and assessment. Staff must maintain a good working knowledge of the [Buckinghamshire Threshold Document](#) and any updates, how it can be used to safeguard and promote the wellbeing of pupils and how it should be used to inform decision making regarding a referral to local authority children's social care as soon as there is a significant concern.
- The process for making referrals to local authority children's social care and for statutory assessments that may follow a referral, including the role they might be expected to play
- What to do if they identify a safeguarding issue or a child tells them they are being abused or neglected, including specific issues such as FGM, and how to maintain an appropriate level of confidentiality while liaising with relevant professionals
- The signs of different types of abuse and neglect, as well as specific safeguarding issues, such as child sexual exploitation (CSE), indicators of being at risk from or involved with serious violent crime, FGM and radicalisation
- That the most common reason for children becoming looked after is as a result of abuse and/or neglect and that previously looked after children remain vulnerable. Staff have the skills, knowledge and understanding to keep both looked after children and previously looked after children safe.
- The increased vulnerability and barriers that exist when recognising abuse and neglect for children with Special Educational Needs or Disabilities.

The Governing Board

The Governing Board will

- Approve this policy at each review, ensure it complies with the law and hold the headteacher to account for its implementation
- Ensure that the Headteacher and (when not the Headteacher) the DSL create and maintain a strong, positive culture of safeguarding within the school
- Ensure that this policy reflects the unique features of the community we serve and the needs of the pupils attending our provision
- Regularly monitor and evaluate the effectiveness of this Child Protection Policy and be satisfied that it is being complied with
- Appoint a Designated Safeguarding Lead (DSL), who is a member of the Senior Leadership Team (SLT) and has the required level of authority, and also appoint at least one Deputy DSL. The Headteacher has overall responsibility for safeguarding within the school; they can be the DSL or can delegate that work to a member of the SLT. The roles and responsibilities of the DSL and Deputy DSL are made explicit in those post-holders' job descriptions
- Recognise the importance of the role of the DSL, ensuring they have sufficient time, training, skills and resources to be effective. Refresher training must be attended every 2 years, in addition knowledge and skills must be refreshed at regular intervals, at least annually
- Ensure measures are in place for the governing board to have oversight of how the school's delivery against its safeguarding responsibilities are exercised and evidenced. Ensure robust structures are in place to challenge the Headteacher where there are any identified gaps in practice or procedures are not followed
- Ensure resources are allocated, as a priority, to meet the needs of pupils requiring child protection or early intervention
- Ensure the DSL completes an Annual Safeguarding Report for Governors, demonstrating how we are meeting our statutory responsibilities for safeguarding and promoting the welfare of children. Ensure a copy of this report is shared with the Education Safeguarding Advisory Service within the specified time frame

It is the duty of the Chair of Governors to liaise with relevant agencies if any allegations are made against the Headteacher. If there are concerns that issues are not being progressed in an expedient manner, staff/pupils/parents/carers should escalate concerns to the Local Authority Designated Officer (LADO).

The Governing Board must ensure that a named teacher is designated for Children Looked After and that an up to date list of children who are subject to a Care Order or are accommodated by the County Council is regularly reviewed and updated. The school must work with the Virtual Schools Team to support the educational attainment for those children who are Looked After.

The Governing Board has a statutory duty to appoint a Nominated Governor for Child Protection. The Nominated Governor must be familiar with [Buckinghamshire Safeguarding Children Partnership](#) procedures, Local Authority procedures and guidance issued by the Department for Education. The Nominated Governor must:

- Work with the DSL to produce the Child Protection Policy annually
- Undertake appropriate safeguarding training, to include Prevent Training
- Ensure child protection is, as a minimum, an annual agenda item for the Governing Board
- Meet at least termly with the DSL to review and monitor the school's delivery on its safeguarding responsibilities and to review the Single Central Record

All governors must complete safeguarding training on appointment, to also include Prevent training.

Overall responsibility for the safeguarding of pupils remains with the Headteacher, although tasks may be delegated to other members of the team, including the nominated DSL if appropriate.

Designated Safeguard Lead (DSL)

The DSL is a member of the senior leadership team. Our DSL is **Liz Astley (Headteacher)**. The DSL takes lead responsibility for child protection and wider safeguarding.

During term time, the DSL will be available during school hours to discuss safeguarding concerns. They can be contacted on 01753 643319.

When the DSL is absent, the deputy is **Amanda Benians (Deputy Headteacher)** who will act as cover.

If the DSL and deputy are not available, **Kyra Sheehan (SBM) / Rani Makkar (AHT)** will act as cover.

The Designated Safeguarding Lead (DSL) is responsible for:

- Creating a culture of safeguarding within the school, where children are protected from harm. Ensuring all staff receive an appropriate level of induction and training to support them to be professionally curious and vigilant in order to question behaviours and challenge perceptions if they have concerns for a pupil
- Ensuring children receive the right help at the right time using the Buckinghamshire Threshold Document to inform plans for support or protection (see Appendix 1 for definitions of the categories of abuse)
- Ensuring referrals to partner agencies are followed up in writing, within 24 hrs of initial contact, including referrals to First Response.
- Establishing and embedding a policy and process for recording and storing information about child protection concerns and outcomes achieved, enabling records to be reviewed and an overview gained, in order to support timely interventions and allow prompt follow up. This includes use of the Escalation Process found on the BSCP website
- Ensuring safeguarding records, legislation and guidance are up to date and are maintained in accordance with data protection. Ensuring records are stored safely and securely and remain confidential. That:
 - the DSL must share information, both internally and externally, on a 'need to know' basis only, being able to justify the reason for sharing and in accordance with the confidentiality policy
 - all child protection files are held separately from pupil educational records
- Maintaining the record of staff safeguarding training. Ensuring that The Stoke Poges School most up to date **Child Protection Policy** is widely available (this may be on the website), publishing the **Safeguarding Statement** and other relevant information on the school website. Ensuring that the safeguarding team contact details and photos are displayed in prominent areas around the school and also on the website
- Being the designated point of contact for staff to be able to discuss and share their concerns, developing a culture whereby staff feel comfortable to do so. In their absence the DSL will ensure the Deputy DSL, or most senior member of staff, is available (The DSL and the Deputy are both trained to the same level within our school)
- Being available to staff and outside agencies during school hours and term time for consultation on safeguarding concerns raised. Having responsibility to ensure that cover is arranged outside of term-time during working hours

- During residential and extended school hours, ensuring arrangements are in place for staff to have a point of contact
- Contributing effectively to multiagency working, for the safeguarding and promotion of the welfare of children, this could include:
 - participating in Strategy discussions
 - attending Child Protection Case Conferences
 - submitting reports to the conference, which must be shared in advance with the parents/carers
 - contributing effectively and taking shared responsibility for core group meetings with all other agencies involved
 - engaging fully, as requested, in any other multi-agency planning meetings
 - contributing to the Framework for Assessments process
 - ensuring coverage is available at all times during the year
- Providing the Headteacher (if the Headteacher is not the DSL), with an annual report for the Governing Board, detailing how school delivers on its safeguarding responsibilities and any child protection issues within the school. The Governing Board will use this report to fulfil its responsibility to provide the Local Authority with information about their safeguarding policies and procedures
- Meeting regularly (at least once a term) with the Nominated Governor to share oversight of the safeguarding provision within the setting, monitor performance and develop plans to rectify any gaps in policy or procedure
- Meeting the statutory requirement to keep up to date with knowledge, enabling them to fulfil their role, including attending mandatory and any other additional relevant training
- Referring immediately to the Police any cases where a criminal offence may have been committed or risk of harm is imminent

The Headteacher

The headteacher is responsible for the implementation of this policy, including:

- Ensuring that staff (including temporary staff) and volunteers are informed of our systems which support safeguarding, including this policy, as part of their induction
- Communicating this policy to parents when their child joins the school and via the school website
- Ensuring that the DSL has appropriate time, funding, training and resources, and that there is always adequate cover if the DSL is absent
- Ensuring that all staff undertake appropriate safeguarding and child protection training and update this regularly
- Acting as the 'case manager' in the event of an allegation of abuse made against another member of staff or volunteer, where appropriate (see Appendix 5)
- Ensuring the relevant staffing ratios are met in EYFS, where applicable

6. Procedures

Our school procedures for all staff, volunteers and visitors in safeguarding and protecting children from harm are in line with Buckinghamshire County Council and [Buckinghamshire Safeguarding Children Partnership](#) safeguarding procedures, "Working Together to Safeguard Children 2018", "Keeping Children Safe in Education" 2020 and statutory guidance issued under section 29 of the Counter-Terrorism and Security Act 2015.

We will ensure:

- We have a designated member of the Senior Leadership Team who has undertaken appropriate training for the role, as recommended by the BSCP. Our Designated Safeguarding Lead (DSL) will be required to update their training in accordance with the Learning Pathway agreed by the BSCP
- We have a member of staff (Deputy DSL) who will act in the DSL's absence and who has also received training for the role of DSL. In the absence of an appropriately trained member of staff, the most senior member of staff on site will assume this role
- All adults (including supply teachers and volunteers) new to our school are made aware of the school's policy and procedures for child protection, the name and contact details of the DSL, their role and responsibilities under "Keeping Children Safe in Education 2020" and the booklet "What to do if You're Worried a Child is Being Abused". They will have these explained, as part of their induction into the school

Visitors must be :

- Clearly identified with visitor/contractor passes
- Met and directed by school staff/representatives
- Signed in and out of the school by school staff
- Given a safeguarding leaflet to read, or directed to a poster informing them of how to report a concern
- Given restricted access to only specific areas of the school, as appropriate
- Escorted by a member of staff/representative as required
- Given access to pupils restricted to the purpose of their visit

All members of staff must complete regular safeguarding training, attend regular refresher training and partake in any training opportunities arranged or delivered by the DSL. Updates must be cascaded to all staff throughout the year, at a minimum of once a year.¹

All parents/carers must be made aware of the school's responsibilities in regard to child protection procedures through this policy, which is available on our website. Hard copies are also available from the school office.

All staff must follow the reporting procedures as follows when reporting any child protection concerns:

- Staff must ensure the child is in a safe place and in receipt of support
- Staff must initially make a verbal report to the DSL to alert them to the safeguarding/child protection concern
- Staff must make a written report using the school record keeping process
- All concerns must be reported on CPOMS, our electronic system and the DSL alerted
- Staff must ensure the time and date of the incident is recorded
- A factual account of the incident must be recorded, including who was involved, what was said/seen/heard, where the incident took place and any actual words or phrases used by the child
- Use a body map to record any injuries seen or reported by the child

The DSL must record what action was taken alongside any outcomes achieved.

Through our Attendance Policy, we have a robust system for monitoring attendance and will act to address absenteeism with parents/carers and pupils promptly and identify any safeguarding issues arising.

- All children attending our school are required to have a minimum of two identified emergency contacts
- Any pupil absent for ten school days, where it has not been possible to make contact with a parent/carer, will be reported as a Child Missing in Education (CME) using the Buckinghamshire CME Protocol
- Any absence, without satisfactory explanation, of a pupil currently subject to a child protection or child in need plan is immediately referred to their social worker
- Parents/carers must inform school if there are any changes to a pupil's living arrangement. The Stoke Poges School has a mandatory duty to inform the local authority, via the First Response Team, if a child under the age of 16 years old lives with someone other than their parent, step-parent, aunt, uncle or grandparent for a period of more than 28 days. This is defined as being a private fostering arrangement
- All staff, parents/carers and children are made aware of the school's escalation process, which can be activated in the event of concerns not being resolved after the first point of contact. We acknowledge an individual's safeguarding responsibility does not end once they have informed the DSL of any concerns, although specific details of further actions may be appropriately withheld by the DSL as information will only be shared on a need to know basis

Our lettings policy reflects the ongoing responsibility the school has for safeguarding those using the site outside of normal school hours, ensuring the suitability of adults working with children on school sites at any time. School must have sight of the up to date Child Protection Policy of any organisation hiring the school's facilities.

The school operates Safer Recruitment practices, including ascertaining the suitability of volunteers and employed staff, both employed directly or via an agency, who are working in regulated activities.

Allegations against members of staff, including volunteers, are referred to the Local Authority Designated Officer (LADO).

Our procedures are reviewed and updated annually as a minimum, or as there are changes to legislation.

7. Confidentiality

We recognise that all matters relating to child protection are confidential.

The Headteacher or Designated Safeguarding Lead must only disclose personal information about a pupil to other members of staff on a need to know basis.

Staff must not keep duplicate or personal records of child protection concerns. All information must be reported to the Designated Safeguarding Lead and securely stored in the designated location within the school, separate from the pupil records.

¹ "Keeping Children Safe in Education 2020" states that staff should receive regular training. Buckinghamshire County Council advises that this takes place no longer than 3 years in between refresher training.

All staff are aware they cannot promise a child to keep secrets which might compromise the child's safety or well-being or that of another as they have a duty to share. Staff must, however, reassure the child that information will only be shared with those people who will be able to help them and therefore need to know.

We will always undertake to share our intention to refer a child to Social Care (First Response) with their parent/carer's consent, unless to do so could put the child at greater risk of harm or impede a criminal investigation. If in doubt, we will consult with First Response on this point. We recognise that GDPR must not be a barrier for sharing information regarding safeguarding concerns.

Staff should note:

- Timely information sharing is essential to effective safeguarding
- Fears about sharing information must not be allowed to stand in the way of the need to promote the welfare, and protect the safety, of children
- The Data Protection Act (DPA 2018 and GDPR do not prevent, or limit, the sharing of information for the purposes of keeping children safe
- If staff need to share 'special category personal data', the DPA 2018 contains 'safeguarding of children and individuals at risk' as a processing condition that allows practitioners to share information without consent if it is not possible to gain consent, it cannot be reasonably expected that a practitioner gains consent, or if to gain consent would place a child at risk
- The government's [information sharing advice for safeguarding practitioners](#) includes 7 'golden rules' for sharing information, and will support staff who have to make decisions about sharing information
- If staff are in any doubt about sharing information, they should speak to the designated safeguarding lead (or deputy)

Confidentiality is also addressed in this policy with respect to record-keeping in section 16, and allegations of abuse against staff in Appendix 5.

8. Recognising abuse and acting

Staff, volunteers and governors must follow the procedures set out below in the event of a safeguarding issue.

If a child is suffering or likely to suffer harm, or in immediate danger

- Make a referral to children's social care and/or police **immediately** if you believe a child is suffering or likely to suffer from harm, or in immediate danger. **Anyone can make a referral.**
- Tell the DSL as soon as possible if you make a referral directly

(See Appendix 3 for support)

Dealing with a disclosure

In the event of a child disclosing abuse staff must:

- Listen to the child, allowing the child to tell what has happened in his/her own way, and at his/her own pace. Staff must not interrupt a child who is freely recalling significant events
- Remain calm. Be reassuring and supportive, endeavouring to not respond emotionally
- Not ask leading questions. Staff are reminded to ask questions only when seeking clarification about something the child may have said or to gain sufficient information to know that this is a safeguarding concern. Staff are trained to use TED; Tell, Explain, Describe
- Make an accurate record of what they have seen/heard using the school's record keeping processes, recording; times, dates or locations mentioned, using as many words and expressions used by the child, as possible. Staff must not substitute anatomically correct names for body part names used by the child.
- Reassure the child that they did the right thing in telling someone
- Staff must explain to the child what will happen next and the need for the information to be shared with the DSL
- In the unlikely event the DSL and deputy DSL not being available, staff are aware they must share concerns with the most senior member of staff
- The child will be monitored/accompanied at all times following a disclosure, until a plan is agreed as to how best they can be safeguarded

Following a report of concerns the DSL must:

- Decide whether there are sufficient grounds for suspecting significant harm, in which case a referral must be made to First Response and the police if it is appropriate. The rationale for this decision should be recorded by the DSL
- Normally the school should try to discuss any concerns about a child's welfare with parents/carers and, where possible, obtain consent before making a referral to First Response. However, in accordance with DfE

guidance, this should only be done when it will not place the child at increased risk or could impact a police investigation. Where there are doubts or reservations about involving the child's family, the DSL should clarify with First Response or the police whether the parents/carers should be told about the referral and, if so, when and by whom. This is important in cases where the police may need to conduct a criminal investigation. The child's views should also be considered

- If there are grounds to suspect a child is suffering or is likely to suffer significant harm, the DSL (or Deputy) must contact First Response by telephone in first instance and then complete the Multi Agency Referral Form (MARF) making a clear statement of:
 - the known facts
 - any suspicions or allegations
 - whether or not there has been any contact with the child's family
- If the child is in immediate danger and urgent protective action is required, the police must be called. The DSL must then notify First Response of the occurrence and what action has been taken
- If a child needs urgent medical attention, the DSL (or Deputy) should call an ambulance via 999. DSL to contact First Response; advice to be sought from First Response about informing parents/carers

If you discover that FGM has taken place or a pupil is at risk of FGM

The Department for Education's Keeping Children Safe in Education explains that FGM comprises "all procedures involving partial or total removal of the external female genitalia, or other injury to the female genital organs".

FGM is illegal in the UK and a form of child abuse with long-lasting, harmful consequences. It is also known as 'female genital cutting', 'circumcision' or 'initiation'.

Possible indicators that a pupil has already been subjected to FGM, and factors that suggest a pupil may be at risk, are set out in Appendix 6.

Any teacher who discovers (either through disclosure by the victim or visual evidence) that an act of FGM appears to have been carried out on a **pupil under 18** must immediately report this to the police, personally. This is a statutory duty, and teachers will face disciplinary sanctions for failing to meet it.

Unless they have been specifically told not to disclose, they should also discuss the case with the DSL and involve children's social care as appropriate.

Any other member of staff who discovers that an act of FGM appears to have been carried out on a **pupil under 18** must speak to the DSL and follow our local safeguarding procedures.

The duty for teachers mentioned above does not apply in cases where a pupil is *at risk* of FGM or FGM is suspected but is not known to have been carried out. Staff should not examine pupils.

Any member of staff who suspects a pupil is *at risk* of FGM or suspects that FGM has been carried out must speak to the DSL and follow our local safeguarding procedures.

If you have concerns about a child (as opposed to believing a child is suffering or likely to suffer from harm, or is in immediate danger)

Speak to the DSL first to agree a course of action.

If in exceptional circumstances the DSL is not available, this should not delay appropriate action being taken. Speak to a member of the senior leadership team and/or take advice from local authority children's social care. You can also seek advice at any time from the NSPCC helpline on 0808 800 5000. Share details of any actions you take with the DSL as soon as practically possible.

Make a referral to local authority children's social care directly. Share any action taken with the DSL as soon as possible.

Early help

If early help is appropriate, the DSL will generally lead on liaising with other agencies and setting up an inter-agency assessment as appropriate. Staff may be required to support other agencies and professionals in an early help assessment, in some cases acting as the lead practitioner.

The DSL will keep the case under constant review and the school will consider a referral to local authority children's social care if the situation does not seem to be improving. Timelines of interventions will be monitored and reviewed.

Referral

If it is appropriate to refer the case to local authority children's social care or the police, the DSL will make the referral or support you to do so.

If you make a referral directly, you must tell the DSL as soon as possible.

The local authority will decide within 1 working day of a referral about what course of action to take and will let the person who made the referral know the outcome. The DSL or person who made the referral must follow up with the local authority if this information is not made available, and ensure outcomes are properly recorded.

If the child's situation does not seem to be improving after the referral, the DSL or person who made the referral must follow local escalation procedures to ensure their concerns have been addressed and that the child's situation improves.

If you have concerns about extremism

If a child is not suffering or likely to suffer from harm, or in immediate danger, where possible speak to the DSL first to agree a course of action.

If in exceptional circumstances the DSL is not available, this should not delay appropriate action being taken. Speak to a member of the senior leadership team and/or seek advice from local authority children's social care. Make a referral to local authority children's social care directly, if appropriate. Inform the DSL or deputy as soon as practically possible after the referral.

Where there is a concern, the DSL will consider the level of risk and decide which agency to make a referral to. This could include [Channel](#), the government's programme for identifying and supporting individuals at risk of being drawn into terrorism, or the local authority children's social care team.

The Department for Education also has a dedicated telephone helpline, 020 7340 7264, which school staff and governors can call to raise concerns about extremism with respect to a pupil. You can also email counter.extremism@education.gov.uk. Note that this is not for use in emergency situations.

In an emergency, call 999 or the confidential anti-terrorist hotline on 0800 789 321 if you:

- Think someone is in immediate danger
- Think someone may be planning to travel to join an extremist group
- See or hear something that may be terrorist-related

If you have a mental health concern

Mental health problems can, in some cases, be an indicator that a child has suffered or is at risk of suffering abuse, neglect or exploitation.

Staff will be alert to behavioural signs that suggest a child may be experiencing a mental health problem or be at risk of developing one.

If you have a mental health concern about a child that is also a safeguarding concern, take immediate action by speaking to the DSL.

If you have a mental health concern that is not also a safeguarding concern, speak to the DSL to agree a course of action.

(See Department for Education guidance on [mental health and behaviour in schools](#) for more information.)

Concerns about a staff member, supply teacher or volunteer

If you have concerns about a member of staff (including a supply teacher or volunteer), or an allegation is made about a member of staff (including a supply teacher or volunteer) posing a risk of harm to children, speak to the headteacher. If the concerns/allegations are about the headteacher, speak to the chair of governors.

The headteacher/chair of governors will then follow the procedures set out in Appendix 5, if appropriate.

If the concerns/allegations are about the headteacher, the chair of governors will speak to the designated officer at the local authority.

Allegations of abuse made against other pupils

We recognise that children are capable of abusing their peers. Abuse will never be tolerated or passed off as "banter", "just having a laugh" or "part of growing up".

We also recognise the gendered nature of peer-on-peer abuse. However, all peer-on-peer abuse is unacceptable and will be taken seriously.

Most cases of pupils hurting other pupils will be dealt with under our school's behaviour policy, but this child protection and safeguarding policy will apply to any allegations that raise safeguarding concerns. This might include where the alleged behaviour:

- Is serious, and potentially a criminal offence
- Could put pupils in the school at risk
- Is violent
- Involves pupils being forced to use drugs or alcohol
- Involves sexual exploitation, sexual abuse or sexual harassment, such as indecent exposure, sexual assault, upskirting or sexually inappropriate pictures or videos (including sexting)

If a pupil makes an allegation of abuse against another pupil:

- You must record the allegation and tell the DSL, but do not investigate it
- The DSL will contact the local authority children's social care team and follow its advice, as well as the police if the allegation involves a potential criminal offence
- The DSL will put a risk assessment and support plan into place for all children involved (including the victim(s), the child(ren) against whom the allegation has been made and any others affected) with a named person they can talk to if needed
- The DSL will contact the children and adolescent mental health services (CAMHS), if appropriate

We will minimise the risk of peer-on-peer abuse by:

- Challenging any form of derogatory or sexualised language or behaviour, including requesting or sending sexual images
- Being vigilant to issues that particularly affect different genders – for example, sexualised or aggressive touching or grabbing towards female pupils, and initiation or hazing type violence with respect to boys
- Ensuring our curriculum helps to educate pupils about appropriate behaviour and consent
- Ensuring pupils know they can talk to staff confidentially
- Ensuring staff are trained to understand that a pupil harming a peer could be a sign that the child is being abused themselves, and that this would fall under the scope of this policy

Sexting

Staff responsibilities when responding to an incident:

If you are made aware of an incident involving sexting (also known as 'youth produced sexual imagery'), you must report it to the DSL immediately.

You must not:

- View, download or share the imagery yourself, or ask a pupil to share or download it. If you have already viewed the imagery by accident, you must report this to the DSL
- Delete the imagery or ask the pupil to delete it
- Ask the pupil(s) who are involved in the incident to disclose information regarding the imagery (this is the DSL's responsibility)
- Share information about the incident with other members of staff, the pupil(s) it involves or their, or other, parents and/or carers
- Say or do anything to blame or shame any young people involved

You should explain that you need to report the incident, and reassure the pupil(s) that they will receive support and help from the DSL.

Initial review meeting

Following a report of an incident, the DSL will hold an initial review meeting with appropriate school staff. This meeting will consider the initial evidence and aim to determine:

- Whether there is an immediate risk to pupil(s)
- If a referral needs to be made to the police and/or children's social care
- If it is necessary to view the imagery in order to safeguard the young person (in most cases, imagery should not be viewed)
- What further information is required to decide on the best response
- Whether the imagery has been shared widely and via what services and/or platforms (this may be unknown)
- Whether immediate action should be taken to delete or remove images from devices or online services
- Any relevant facts about the pupils involved which would influence risk assessment
- If there is a need to contact another school, college, setting or individual
- Whether to contact parents or carers of the pupils involved (in most cases parents should be involved)

The DSL will make an immediate referral to police and/or children's social care if:

- The incident involves an adult

- There is reason to believe that a young person has been coerced, blackmailed or groomed, or if there are concerns about their capacity to consent (for example owing to special educational needs)
- What the DSL knows about the imagery suggests the content depicts sexual acts which are unusual for the young person's developmental stage, or are violent
- The imagery involves sexual acts and any pupil in the imagery is under 13
- The DSL has reason to believe a pupil is at immediate risk of harm owing to the sharing of the imagery (for example, the young person is presenting as suicidal or self-harming)

If none of the above apply then the DSL, in consultation with the headteacher and other members of staff as appropriate, may decide to respond to the incident without involving the police or children's social care.

Further review by the DSL

If at the initial review stage a decision has been made not to refer to police and/or children's social care, the DSL will conduct a further review.

They will hold interviews with the pupils involved (if appropriate) to establish the facts and assess the risks.

If at any point in the process there is a concern that a pupil has been harmed or is at risk of harm, a referral will be made to children's social care and/or the police immediately.

Informing parents

The DSL will inform parents at an early stage and keep them involved in the process, unless there is a good reason to believe that involving them would put the pupil at risk of harm.

Referring to the police

If it is necessary to refer an incident to the police, this will be done dialing 101

Recording incidents

All sexting incidents and the decisions made in responding to them will be recorded. The record-keeping arrangements set out in section 14 of this policy also apply to recording incidents of sexting.

9. E-Safety

All staff are aware of the school policy on **E-Safety** which sets out our expectations relating to:

- Creating a safer online learning environment
- Giving everyone the skills, knowledge and understanding to help children stay safe on-line, question the information they are accessing and support the development of critical thinking
- Inspiring safe and responsible use of mobile technologies, to combat behaviours on-line which may make pupils vulnerable, including sexting (youth-produced sexual imagery)
- Use of mobile technology both within school and on school trips/ outings
- Use of camera equipment, including smart phones
- What steps to take if there are concerns and where to go for help

Staff use of social media is set out in the **Staff Code of Conduct**.

Cyber-bullying by children, via texts, social media and emails, will be treated as seriously as any other type of bullying and will be managed through our anti-bullying procedures. This includes sexting and image exchange under threat or through coercion.

Pupils, staff and parents/carers are supported to understand the risks posed by:

- the **CONTENT** accessed by pupils
- their **CONDUCT** on-line
- and who they have **CONTACT** with in the digital world.

Visitors to our school are respectfully requested to turn all mobile devices off. This is a safeguarding measure for our pupils.

10. Notifying parents

Where appropriate, we will discuss any concerns about a child with the child's parents. The DSL will normally do this in the event of a suspicion or disclosure.

Other staff will only talk to parents about any such concerns following consultation with the DSL.

If we believe that notifying the parents would increase the risk to the child, we will discuss this with the local authority children's social care team before doing so.

In the case of allegations of abuse made against other children, we will normally notify the parents of all the children involved.

11. Pupils with special educational needs and disabilities

We recognise that pupils with special educational needs (SEN) and disabilities can face additional safeguarding challenges. Additional barriers can exist when recognising abuse and neglect in this group, including:

- Assumptions that indicators of possible abuse such as behaviour, mood and injury relate to the child's disability without further exploration
- Pupils being more prone to peer group isolation than other pupils
- The potential for pupils with SEN and disabilities being disproportionately impacted by behaviours such as bullying, without outwardly showing any signs
- Communication barriers and difficulties in overcoming these barriers

12. Pupils with a social worker

Pupils may need a social worker due to safeguarding or welfare needs. We recognise that a child's experiences of adversity and trauma can leave them vulnerable to further harm as well as potentially creating barriers to attendance, learning, behaviour and mental health.

The DSL and all members of staff will work with and support social workers to help protect vulnerable children.

Where we are aware that a pupil has a social worker, the DSL will always consider this fact to ensure any decisions are made in the best interests of the pupil's safety, welfare and educational outcomes. For example, it will inform decisions about:

- Responding to unauthorised absence or missing education where there are known safeguarding risks
- The provision of pastoral and/or academic support

13. Looked-after and previously looked-after children

We will ensure that staff have the skills, knowledge and understanding to keep looked-after children and previously looked-after children safe. In particular, we will ensure that:

- Appropriate staff have relevant information about children's looked after legal status, contact arrangements with birth parents or those with parental responsibility, and care arrangements
- The DSL has details of children's social workers and relevant virtual school heads

We have appointed a designated teacher, **Liz Astley (Headteacher)**, who is responsible for promoting the educational achievement of looked-after children and previously looked-after children in line with [statutory guidance](#). The designated teacher is appropriately trained and has the relevant qualifications and experience to perform the role.

As part of their role, the designated teacher will:

- Work closely with the DSL to ensure that any safeguarding concerns regarding looked-after and previously looked-after children are quickly and effectively responded to
- Work with virtual school heads to promote the educational achievement of looked-after and previously looked-after children, including discussing how pupil premium plus funding can be best used to support looked-after children and meet the needs identified in their personal education plans

14. Mobile phones and cameras

Staff are allowed to bring their personal phones to school for their own use, but will limit such use to non-contact time when pupils are not present. Staff members' personal phones will remain in their bags or cupboards during contact time with pupils.

Staff will not take pictures or recordings of pupils on their personal phones or cameras.

We will follow the General Data Protection Regulation and Data Protection Act 2018 when taking and storing photos and recordings for use in the school.

(Please see separate policy document.)

15. Complaints and concerns about school safeguarding policies

Complaints against staff

Complaints against staff that are likely to require a child protection investigation will be handled in accordance with our procedures for dealing with allegations of abuse made against staff (see Appendix 5).

Whistle-blowing

We have a Whistleblowing Policy which can be found on the g-drive. Staff are required to familiarise themselves with this document during their induction period.

All staff must be aware of their duty to raise concerns about the attitude or actions of colleagues and report their concerns to the Headteacher or Chair of Governors (if the concern is about the Headteacher).

16. Record-keeping

We will hold records in line with our records retention schedule.

When a disclosure of abuse or an allegation against a member of staff or volunteer has been made, our school must have a record of this. These records are maintained in a way that is confidential and secure, in accordance with our Record Keeping Policy and Data Protection Legislation.

There is a statutory requirement for our school to pass any child protection records to the pupil's next school. We are required to have an auditable system in place to evidence we have done so. Any transfer of records will be carried out using a secure method and will be sent separately to the pupil's general file.

The last statutory school maintains child protection files until a pupil reaches the age of 25 years, therefore if the transfer school is unknown, or a pupil is going to be electively home educated, any child protection files will remain at our school in a secure location. Child protection files will only be destroyed when the pupil reaches their 25th birthday.

We have a robust system for reviewing our archived information held. Our files are stored and disposed of in line with GDPR protocols.

In addition:

Appendix 4 sets out our policy on record-keeping specifically with respect to recruitment and pre-employment checks
Appendix 5 sets out our policy on record-keeping with respect to allegations of abuse made against staff

17. Training

All staff

All staff members will undertake safeguarding and child protection training at induction, including on whistle-blowing procedures, to ensure they understand the school's safeguarding systems and their responsibilities, and can identify signs of possible abuse or neglect. This training will be regularly updated and will be in line with advice from the 3 safeguarding partners.

All staff will have training on the government's anti-radicalisation strategy, Prevent, to enable them to identify children at risk of being drawn into terrorism and to challenge extremist ideas.

Staff will also receive regular safeguarding and child protection updates (for example, through emails, e-bulletins and staff meetings) as required, but at least annually.

Volunteers will receive appropriate training, if applicable.

The DSL and deputy

The DSL and deputy will undertake child protection and safeguarding training at least every 2 years.

In addition, they will update their knowledge and skills at regular intervals and at least annually (for example, through e-bulletins, meeting other DSLs, or taking time to read and digest safeguarding developments).

They will also undertake Prevent awareness training.

Governors

All governors receive training about safeguarding, to make sure they have the knowledge and information needed to perform their functions and understand their responsibilities.

As the chair of governors may be required to act as the 'case manager' in the event that an allegation of abuse is made against the headteacher, they receive training in managing allegations for this purpose.

Recruitment – interview panels

At least one person conducting any interview for a post at the school will have undertaken safer recruitment training. This will cover, as a minimum, the contents of the Department for Education's statutory guidance, Keeping Children Safe in Education, and will be in line with local safeguarding procedures.

18. Health and Safety

We recognise the importance of safeguarding pupils throughout the school day. Our **Health and Safety Policy** reflects the consideration we give to the protection of our children, both physically and emotionally, within the school environment.

Part of the safeguarding measures we have in place include the safe dropping off and collection of pupils at the start and end of the school day. All parents/carers must deliver their children to allocated gate and collect them from here. Parents/carers are expected to inform us via the office if there is to be a change in the arrangement of collection for their child. Children who arrive by taxi are dropped off and picked up at the front office.

Pupils who leave the site during the school day do so only with the written permission of a parent/carer and are collected by an authorised adult where appropriate. School should be notified by the parents/carers regarding whom they have authorised for this task. The child will be brought to the front office by a member of staff, ready for the adult to sign them out.

Children attending the after-school club will be brought to the front hall where members of the club are waiting to register them.

In the event of a pupil going missing during the course of the school day we will carry out immediate checks to ensure the pupil is not on site, we will then contact the pupil's parents/carers and inform the police.

19. Monitoring arrangements

This policy will be reviewed annually by **Liz Astley (Headteacher)**. At every review, it will be approved by the full Governing Board.

Headteacher		Date	
Chair of Governing Body		Date	

These appendices are based on the Department for Education's statutory guidance, **Keeping Children Safe in Education**.

Appendix 1: types of abuse

Abuse, including neglect, and safeguarding issues are rarely standalone events that can be covered by one definition or label. In most cases, multiple issues will overlap.

Physical abuse may involve hitting, shaking, throwing, poisoning, burning or scalding, drowning, suffocating or otherwise causing physical harm to a child. Physical harm may also be caused when a parent or carer fabricates the symptoms of, or deliberately induces, illness in a child.

Emotional abuse is the persistent emotional maltreatment of a child such as to cause severe and adverse effects on the child's emotional development. Some level of emotional abuse is involved in all types of maltreatment of a child, although it may occur alone.

Emotional abuse may involve:

- Conveying to a child that they are worthless or unloved, inadequate, or valued only insofar as they meet the needs of another person
- Not giving the child opportunities to express their views, deliberately silencing them or 'making fun' of what they say or how they communicate
- Age or developmentally inappropriate expectations being imposed on children. These may include interactions that are beyond a child's developmental capability, as well as overprotection and limitation of exploration and learning, or preventing the child participating in normal social interaction
- Seeing or hearing the ill-treatment of another
- Serious bullying (including cyberbullying), causing children frequently to feel frightened or in danger, or the exploitation or corruption of children

Sexual abuse involves forcing or enticing a child or young person to take part in sexual activities, not necessarily involving a high level of violence, whether or not the child is aware of what is happening. The activities may involve:

- Physical contact, including assault by penetration (for example rape or oral sex) or non-penetrative acts such as masturbation, kissing, rubbing and touching outside of clothing
- Non-contact activities, such as involving children in looking at, or in the production of, sexual images, watching sexual activities, encouraging children to behave in sexually inappropriate ways, or grooming a child in preparation for abuse (including via the internet)
- Sexual abuse is not solely perpetrated by adult males. Women can also commit acts of sexual abuse, as can other children.

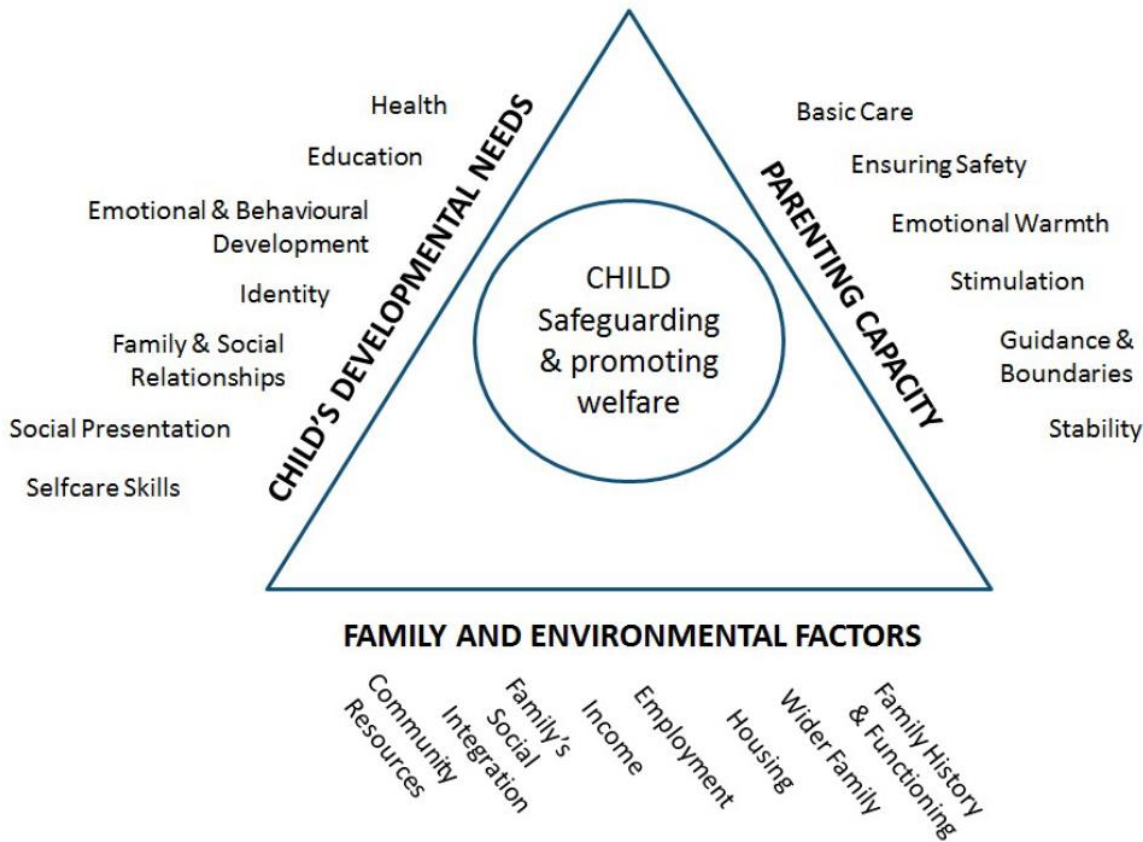
Neglect is the persistent failure to meet a child's basic physical and/or psychological needs, likely to result in the serious impairment of the child's health or development. Neglect may occur during pregnancy as a result of maternal substance abuse.

Once a child is born, neglect may involve a parent or carer failing to:

- Provide adequate food, clothing and shelter (including exclusion from home or abandonment)
- Protect a child from physical and emotional harm or danger
- Ensure adequate supervision (including the use of inadequate care-givers)
- Ensure access to appropriate medical care or treatment
- It may also include neglect of, or unresponsiveness to, a child's basic emotional needs.

Appendix 2 - Assessment Framework

(from Working Together to Safeguard Children, July 2018)



Every assessment should draw together relevant information gathered from the child and their family and from relevant practitioners including teachers and school staff, early years workers, health practitioners, the police and adult social care.

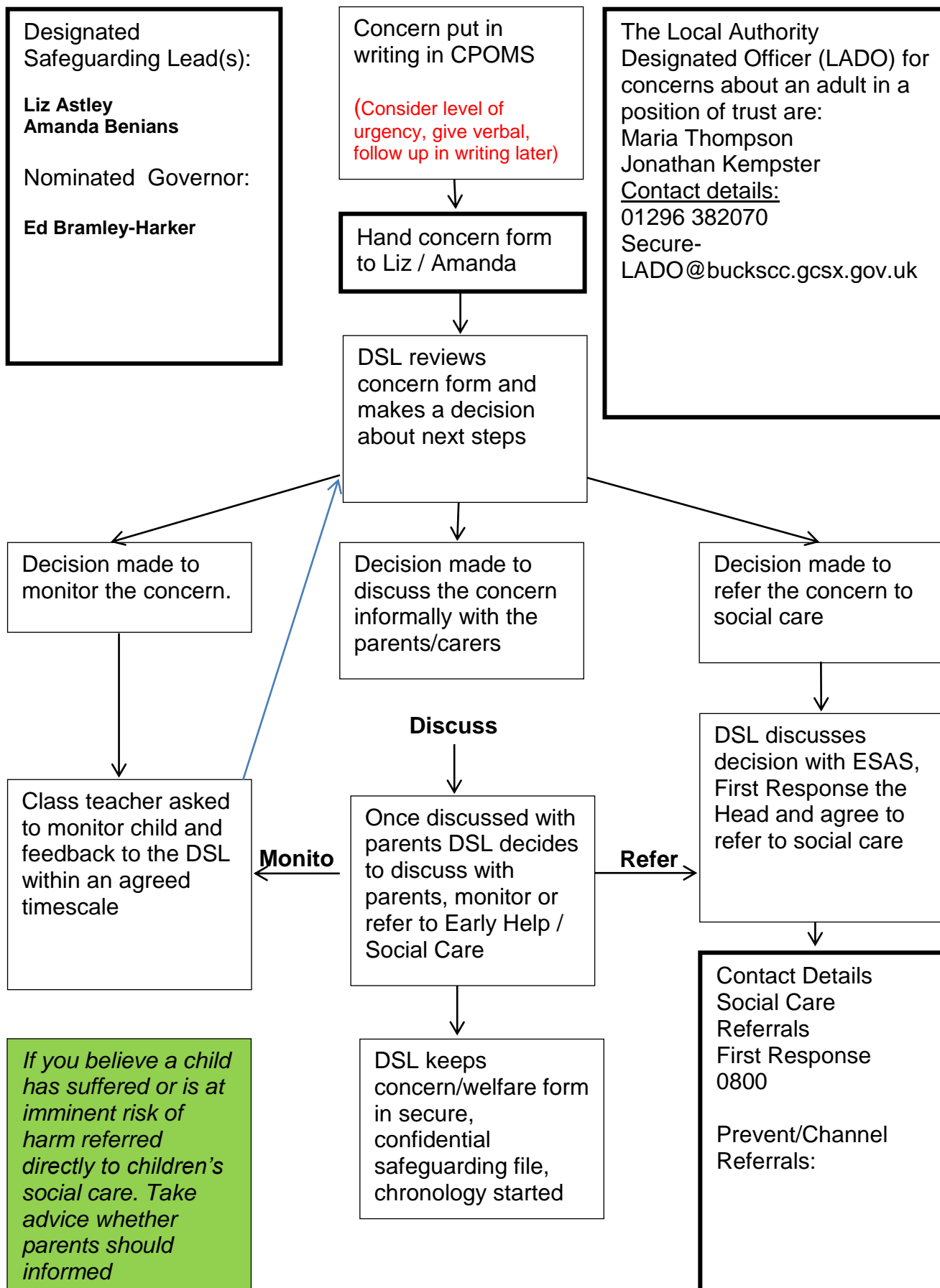
Every assessment of a child should reflect the unique characteristics of the child within their family and community context.

Each child whose referral has been accepted by children's social care should have their individual needs assessed, including an analysis of the parental capacity to meet those needs, whether they arise from issues within the family or the wider community.

Frequently, more than one child from the same family is referred and siblings within the family should always be considered.

Appendix 3

FLOW CHART FOR RAISING SAFEGUARDING CONCERNS ABOUT A CHILD



Appendix 4

Safer recruitment and DBS checks – policy and procedures

We will record all information on the checks carried out in the school's single central record (SCR). Copies of these checks, where appropriate, will be held in individuals' personnel files. We follow requirements and best practice in retaining copies of these checks, as set out below.

New staff

When appointing new staff, we will:

- Verify their identity
- Obtain (via the applicant) an enhanced Disclosure and Barring Service (DBS) certificate, including barred list information for those who will be engaging in regulated activity (see definition below). We will not keep a copy of this for longer than 6 months
- Obtain a separate barred list check if they will start work in regulated activity before the DBS certificate is available
- Verify their mental and physical fitness to carry out their work responsibilities
- Verify their right to work in the UK. We will keep a copy of this verification for the duration of the member of staff's employment and for 2 years afterwards
- Verify their professional qualifications, as appropriate
- Ensure they are not subject to a prohibition order if they are employed to be a teacher
- Carry out further additional checks, as appropriate, on candidates who have lived or worked outside of the UK, including (where relevant) any teacher sanctions or restrictions imposed by a European Economic Area professional regulating authority, and criminal records checks or their equivalent
- We will ensure that appropriate checks are carried out to ensure that individuals are not disqualified under the 2018 Childcare Disqualification Regulations and Childcare Act 2006. Where we take a decision that an individual falls outside of the scope of these regulations and we do not carry out such checks, we will retain a record of our assessment on the individual's personnel file. This will include our evaluation of any risks and control measures put in place, and any advice sought.
- We will ask for written information about previous employment history and check that information is not contradictory or incomplete.
- We will seek references on all short-listed candidates, including internal candidates, before interview. We will scrutinise these and resolve any concerns before confirming appointments. The references requested will ask specific questions about the suitability of the applicant to work with children.

Regulated activity means a person who will be:

- Responsible, on a regular basis in a school or college, for teaching, training, instructing, caring for or supervising children; or
- Carrying out paid, or unsupervised unpaid, work regularly in a school or college where that work provides an opportunity for contact with children; or
- Engaging in intimate or personal care or overnight activity, even if this happens only once and regardless of whether they are supervised or not

Existing staff

If we have concerns about an existing member of staff's suitability to work with children, we will carry out all the relevant checks as if the individual was a new member of staff. We will also do this if an individual moves from a post that is not regulated activity to one that is.

We will refer to the DBS anyone who has harmed, or poses a risk of harm, to a child or vulnerable adult where:

- We believe the individual has engaged in [relevant conduct](#); or
- The individual has received a caution or conviction for a relevant offence, or there is reason to believe the individual has committed a listed relevant offence, under the [Safeguarding Vulnerable Groups Act 2006 \(Prescribed Criteria and Miscellaneous Provisions\) Regulations 2009](#); or
- The 'harm test' is satisfied in respect of the individual (i.e. they may harm a child or vulnerable adult or put them at risk of harm); and
- The individual has been removed from working in regulated activity (paid or unpaid) or would have been removed if they had not left

Agency and third-party staff

We will obtain written notification from any agency or third-party organisation that it has carried out the necessary safer recruitment checks that we would otherwise perform. We will also check that the person presenting themselves for work is the same person on whom the checks have been made.

Contractors

We will ensure that any contractor, or any employee of the contractor, who is to work at the school has had the appropriate level of DBS check (this includes contractors who are provided through a PFI or similar contract). This will be:

- An enhanced DBS check with barred list information for contractors engaging in regulated activity
- An enhanced DBS check, not including barred list information, for all other contractors who are not in regulated activity but whose work provides them with an opportunity for regular contact with children

We will obtain the DBS check for self-employed contractors.

We will not keep copies of such checks for longer than 6 months.

Contractors who have not had any checks will not be allowed to work unsupervised or engage in regulated activity under any circumstances.

We will check the identity of all contractors and their staff on arrival at the school.

For self-employed contractors such as music teachers or sports coaches, we will ensure that appropriate checks are carried out to ensure that individuals are not disqualified under the 2018 Childcare Disqualification Regulations and Childcare Act 2006. Where we decide that an individual falls outside of the scope of these regulations and we do not carry out such checks, we will retain a record of our assessment. This will include our evaluation of any risks and control measures put in place, and any advice sought.

Trainee/student teachers

Where applicants for initial teacher training are salaried by us, we will ensure that all necessary checks are carried out.

Where trainee teachers are fee-funded, we will obtain written confirmation from the training provider that necessary checks have been carried out and that the trainee has been judged by the provider to be suitable to work with children.

In both cases, this includes checks to ensure that individuals are not disqualified under the 2018 Childcare Disqualification Regulations and Childcare Act 2006.

Volunteers

We will:

- Never leave an unchecked volunteer unsupervised or allow them to work in regulated activity
- Obtain an enhanced DBS check with barred list information for all volunteers who are new to working in regulated activity
- Carry out a risk assessment when deciding whether to seek an enhanced DBS check without barred list information for any volunteers not engaging in regulated activity. We will retain a record of this risk assessment
- Ensure that appropriate checks are carried out to ensure that individuals are not disqualified under the 2018 Childcare Disqualification Regulations and Childcare Act 2006. Where we decide that an individual falls outside of the scope of these regulations and we do not carry out such checks, we will retain a record of our assessment. This will include our evaluation of any risks and control measures put in place, and any advice sought

Governors

All governors will have an enhanced DBS check without barred list information.

They will have an enhanced DBS check with barred list information if working in regulated activity.

All governors will also have a section 128 check (as a section 128 direction disqualifies an individual from being a maintained school governor).

Staff working in alternative provision settings

Where we place a pupil with an alternative provision provider, we obtain written confirmation from the provider that they have carried out the appropriate safeguarding checks on individuals working there that we would otherwise perform.

Adults who supervise pupils on work experience

When organising work experience, we will ensure that policies and procedures are in place to protect children from harm.

We will also consider whether it is necessary for barred list checks to be carried out on the individuals who supervise a pupil under 16 on work experience. This will depend on the specific circumstances of the work experience, including the nature of the supervision, the frequency of the activity being supervised, and whether the work is regulated activity.

Appendix 5

Allegations of abuse made against staff

This section of this policy applies to all cases in which it is alleged that a current member of staff, including a supply teacher or volunteer, has:

- Behaved in a way that has harmed a child, or may have harmed a child, or
- Possibly committed a criminal offence against or related to a child, or
- Behaved towards a child or children in a way that indicates he or she may pose a risk of harm to children, or
- Behaved or may have behaved in a way that indicates they may not be suitable to work with children

It applies regardless of whether the alleged abuse took place in the school. Allegations against a teacher who is no longer teaching and historical allegations of abuse will be referred to the police.

We will deal with any allegation of abuse against a member of staff or volunteer very quickly, in a fair and consistent way that provides effective child protection while also supporting the individual who is the subject of the allegation.

Our procedures for dealing with allegations will be applied with common sense and judgement.

Suspension of the accused until the case is resolved

Suspension will not be the default position, and will only be considered in cases where there is reason to suspect that a child or other children is/are at risk of harm, or the case is so serious that it might be grounds for dismissal. In such cases, we will only suspend an individual if we have considered all other options available and there is no reasonable alternative.

Based on an assessment of risk, we will consider alternatives such as:

- Redeployment within the school so that the individual does not have direct contact with the child or children concerned
- Providing an assistant to be present when the individual has contact with children
- Redeploying the individual to alternative work in the school so that they do not have unsupervised access to children
- Moving the child or children to classes where they will not come into contact with the individual, making it clear that this is not a punishment and parents have been consulted
- Temporarily redeploying the individual to another role in a different location, for example to an alternative school or other work for the local authority.

Definitions for outcomes of allegation investigations

- **Substantiated:** there is sufficient evidence to prove the allegation
- **Malicious:** there is sufficient evidence to disprove the allegation and there has been a deliberate act to deceive
- **False:** there is sufficient evidence to disprove the allegation
- **Unsubstantiated:** there is insufficient evidence to either prove or disprove the allegation (this does not imply guilt or innocence)
- **Unfounded:** to reflect cases where there is no evidence or proper basis which supports the allegation being made

Procedure for dealing with allegations

In the event of an allegation that meets the criteria above, the headteacher (or chair of governors where the headteacher is the subject of the allegation) – the ‘case manager’ – will take the following steps:

- Immediately discuss the allegation with the designated officer at the local authority. This is to consider the nature, content and context of the allegation and agree a course of action, including whether further enquiries are necessary to enable a decision on how to proceed, and whether it is necessary to involve the police and/or children’s social care services. (The case manager may, on occasion, consider it necessary to involve the police *before* consulting the designated officer – for example, if the accused individual is deemed to be an immediate risk to children or there is evidence of a possible criminal offence. In such cases, the case manager will notify the designated officer as soon as practicably possible after contacting the police)
- Inform the accused individual of the concerns or allegations and likely course of action as soon as possible after speaking to the designated officer (and the police or children’s social care services, where necessary). Where the police and/or children’s social care services are involved, the case manager will only share such information with the individual as has been agreed with those agencies
- Where appropriate (in the circumstances described above), carefully consider whether suspension of the individual from contact with children at the school is justified or whether alternative arrangements such as

those outlined above can be put in place. Advice will be sought from the designated officer, police and/or children's social care services, as appropriate

- **If immediate suspension is considered necessary**, agree and record the rationale for this with the designated officer. The record will include information about the alternatives to suspension that have been considered, and why they were rejected. Written confirmation of the suspension will be provided to the individual facing the allegation or concern within 1 working day, and the individual will be given a named contact at the school and their contact details
- **If it is decided that no further action is to be taken** in regard to the subject of the allegation or concern, record this decision and the justification for it and agree with the designated officer what information should be put in writing to the individual and by whom, as well as what action should follow both in respect of the individual and those who made the initial allegation
- **If it is decided that further action is needed**, take steps as agreed with the designated officer to initiate the appropriate action in school and/or liaise with the police and/or children's social care services as appropriate
- Provide effective support for the individual facing the allegation or concern, including appointing a named representative to keep them informed of the progress of the case and considering what other support is appropriate.
- Inform the parents or carers of the child/children involved about the allegation as soon as possible if they do not already know (following agreement with children's social care services and/or the police, if applicable). The case manager will also inform the parents or carers of the requirement to maintain confidentiality about any allegations made against teachers (where this applies) while investigations are ongoing. Any parent or carer who wishes to have the confidentiality restrictions removed in respect of a teacher will be advised to seek legal advice
- Keep the parents or carers of the child/children involved informed of the progress of the case and the outcome, where there is not a criminal prosecution, including the outcome of any disciplinary process (in confidence)
- Make a referral to the DBS where it is thought that the individual facing the allegation or concern has engaged in conduct that harmed or is likely to harm a child, or if the individual otherwise poses a risk of harm to a child

We will inform Ofsted of any allegations of serious harm or abuse by any person living, working, or looking after children at the premises (whether the allegations relate to harm or abuse committed on the premises or elsewhere), and any action taken in respect of the allegations. This notification will be made as soon as reasonably possible and always within 14 days of the allegations being made.

If the school is made aware that the secretary of state has made an interim prohibition order in respect of an individual, we will immediately suspend that individual from teaching, pending the findings of the investigation by the Teaching Regulation Agency.

Where the police are involved, wherever possible the Governing Board will ask the police at the start of the investigation to obtain consent from the individuals involved to share their statements and evidence for use in the school's disciplinary process, should this be required at a later point.

Additional considerations for supply staff

If there are concerns or an allegation is made against someone not directly employed by the school, such as supply staff provided by an agency, we will take the actions below in addition to our standard procedures.

- We will not decide to stop using a supply teacher due to safeguarding concerns without finding out the facts and liaising with our local authority designated officer to determine a suitable outcome
- The governing board will discuss with the agency whether it is appropriate to suspend the supply teacher, or redeploy them to another part of the school, while the school carries out the investigation
- We will involve the agency fully, but the school will take the lead in collecting the necessary information and providing it to the local authority designated officer as required
- We will address issues such as information sharing, to ensure any previous concerns or allegations known to the agency are taken into account (we will do this, for example, as part of the allegations management meeting or by liaising directly with the agency where necessary)

When using an agency, we will inform them of our process for managing allegations, and keep them updated about our policies as necessary, and will invite the agency's HR manager or equivalent to meetings as appropriate.

Timescales

- Any cases where it is clear immediately that the allegation is unsubstantiated or malicious will be resolved within 1 week
- If the nature of an allegation does not require formal disciplinary action, we will institute appropriate action within 3 working days

- If a disciplinary hearing is required and can be held without further investigation, we will hold this within 15 working days

Specific actions

Action following a criminal investigation or prosecution

The case manager will discuss with the local authority's designated officer whether any further action, including disciplinary action, is appropriate and, if so, how to proceed, taking into account information provided by the police and/or children's social care services.

Conclusion of a case where the allegation is substantiated

If the allegation is substantiated and the individual is dismissed or the school ceases to use their services, or the individual resigns or otherwise ceases to provide their services, the case manager and the school's personnel adviser will discuss with the designated officer whether to make a referral to the DBS for consideration of whether inclusion on the barred lists is required. If they think that the individual has engaged in conduct that has harmed (or is likely to harm) a child, or if they think the person otherwise poses a risk of harm to a child, they must make a referral to the DBS.

If the individual concerned is a member of teaching staff, the case manager and personnel adviser will discuss with the designated officer whether to refer the matter to the Teaching Regulation Agency to consider prohibiting the individual from teaching.

Individuals returning to work after suspension

If it is decided on the conclusion of a case that an individual who has been suspended can return to work, the case manager will consider how best to facilitate this.

The case manager will also consider how best to manage the individual's contact with the child or children who made the allegation, if they are still attending the school.

Unsubstantiated or malicious allegations

If an allegation is shown to be deliberately invented, or malicious, the headteacher, or other appropriate person in the case of an allegation against the headteacher, will consider whether any disciplinary action is appropriate against the pupil(s) who made it, or whether the police should be asked to consider whether action against those who made the allegation might be appropriate, even if they are not a pupil.

Confidentiality

The school will make every effort to maintain confidentiality and guard against unwanted publicity while an allegation is being investigated or considered.

The case manager will take advice from the local authority's designated officer, police and children's social care services, as appropriate, to agree:

- Who needs to know about the allegation and what information can be shared
- How to manage speculation, leaks and gossip, including how to make parents or carers of a child/children involved aware of their obligations with respect to confidentiality
- What, if any, information can be reasonably given to the wider community to reduce speculation
- How to manage press interest if, and when, it arises

Record-keeping

The case manager will maintain clear records about any case where the allegation or concern meets the criteria above and store them on the individual's confidential personnel file for the duration of the case. Such records will include:

- A clear and comprehensive summary of the allegation
- Details of how the allegation was followed up and resolved
- Notes of any action taken and decisions reached (and justification for these, as stated above)

If an allegation or concern is not found to have been malicious, the school will retain the records of the case on the individual's confidential personnel file, and provide a copy to the individual.

Where records contain information about allegations of sexual abuse, we will preserve these for the Independent Inquiry into Child Sexual Abuse (IICSA), for the term of the inquiry. We will retain all other records at least until the individual has reached normal pension age, or for 10 years from the date of the allegation if that is longer.

The records of any allegation that is found to be malicious will be deleted from the individual's personnel file.

References

When providing employer references, we will not refer to any allegation that has been proven to be false, unsubstantiated or malicious, or any history of allegations where all such allegations have been proven to be false, unsubstantiated or malicious.

Learning lessons

After any cases where the allegations are *substantiated*, we will review the circumstances of the case with the local authority's designated officer to determine whether there are any improvements that we can make to the school's procedures or practice to help prevent similar events in the future.

This will include consideration of (as applicable):

- Issues arising from the decision to suspend the member of staff
- The duration of the suspension
- Whether or not the suspension was justified
- The use of suspension when the individual is subsequently reinstated. We will consider how future investigations of a similar nature could be carried out without suspending the individual

Appendix 6

Specific safeguarding issues

Children missing from education

A child going missing from education, particularly repeatedly, can be a warning sign of a range of safeguarding issues. This might include abuse or neglect, such as sexual abuse or exploitation or child criminal exploitation, or issues such as mental health problems, substance abuse, radicalisation, FGM or forced marriage.

There are many circumstances where a child may become missing from education, but some children are particularly at risk. These include children who:

- Are at risk of harm or neglect
- Are at risk of forced marriage or FGM
- Come from Gypsy, Roma, or Traveller families
- Come from the families of service personnel
- Go missing or run away from home or care
- Are supervised by the youth justice system
- Cease to attend a school
- Come from new migrant families

We will follow our procedures for unauthorised absence and for dealing with children who go missing from education, particularly on repeat occasions, to help identify the risk of abuse and neglect, including sexual exploitation, and to help prevent the risks of going missing in future. This includes informing the local authority if a child leaves the school without a new school being named, and adhering to requirements with respect to sharing information with the local authority, when applicable, when removing a child's name from the admission register at non-standard transition points.

Staff will be trained in signs to look out for and the individual triggers to be aware of when considering the risks of potential safeguarding concerns which may be related to being missing, such as travelling to conflict zones, FGM and forced marriage.

If a staff member suspects that a child is suffering from harm or neglect, we will follow local child protection procedures, including with respect to making reasonable enquiries. We will make an immediate referral to the local authority children's social care team, and the police, if the child is suffering or likely to suffer from harm, or in immediate danger.

Child criminal exploitation

Child criminal exploitation (CCE) is a form of abuse where an individual or group takes advantage of an imbalance of power to coerce, control, manipulate or deceive a child into criminal activity, in exchange for something the victim needs or wants, and/or for the financial or other advantage of the perpetrator or facilitator, and/or through violence or the threat of violence.

The abuse can be perpetrated by males or females, and children or adults. It can be a one-off occurrence or a series of incidents over time, and range from opportunistic to complex organised abuse.

The victim can be exploited even when the activity appears to be consensual. It does not always involve physical contact and can happen online. For example, young people may be forced to work in cannabis factories, coerced into moving drugs or money across the country (county lines), forced to shoplift or pickpocket, or to threaten other young people.

Indicators of CCE can include a child:

- Appearing with unexplained gifts or new possessions
- Associating with other young people involved in exploitation
- Suffering from changes in emotional wellbeing
- Misusing drugs and alcohol
- Going missing for periods of time or regularly coming home late
- Regularly missing school or education
- Not taking part in education

If a member of staff suspects CCE, they will discuss this with the DSL. The DSL will trigger the local safeguarding procedures, including a referral to the local authority's children's social care team and the police, if appropriate.

Child sexual exploitation

Child sexual exploitation (CSE) is a form of abuse where an individual or group takes advantage of an imbalance of power to coerce, manipulate or deceive a child into sexual activity, in exchange for something the victim needs or wants and/or for the financial advantage or increased status of the perpetrator or facilitator. It may, or may not, be accompanied by violence or threats of violence.

The abuse can be perpetrated by males or females, and children or adults. It can be a one-off occurrence or a series of incidents over time, and range from opportunistic to complex organised abuse.

The victim can be exploited even when the activity appears to be consensual. Children or young people who are being sexually exploited may not understand that they are being abused. They often trust their abuser and may be tricked into believing they are in a loving, consensual relationship.

CSE can include both physical contact (penetrative and non-penetrative acts) and non-contact sexual activity. It can also happen online. For example, young people may be persuaded or forced to share sexually explicit images of themselves, have sexual conversations by text, or take part in sexual activities using a webcam. CSE may also occur without the victim's immediate knowledge, for example through others copying videos or images.

In addition to the CCE indicators above, indicators of CSE can include a child:

- Having an older boyfriend or girlfriend
- Suffering from sexually transmitted infections or becoming pregnant

If a member of staff suspects CSE, they will discuss this with the DSL. The DSL will trigger the local safeguarding procedures, including a referral to the local authority's children's social care team and the police, if appropriate.

Domestic abuse

Children can witness and be adversely affected by domestic abuse and/or violence at home where it occurs between family members. In some cases, a child may blame themselves for the abuse or may have had to leave the family home as a result.

Exposure to domestic abuse and/or violence can have a serious, long-lasting emotional and psychological impact on children.

If police are called to an incident of domestic abuse and any children in the household have experienced the incident, the police will inform the key adult in school (usually the designated safeguarding lead) before the child or children arrive at school the following day. The DSL will provide support according to the child's needs and update records about their circumstances.

Homelessness

Being homeless or being at risk of becoming homeless presents a real risk to a child's welfare.

The DSL and Deputy will be aware of contact details and referral routes in to the local housing authority so they can raise/progress concerns at the earliest opportunity (where appropriate and in accordance with local procedures). Where a child has been harmed or is at risk of harm, the DSL will also make a referral to children's social care.

So-called 'honour-based' abuse (including FGM and forced marriage)

So-called 'honour-based' abuse (HBA) encompasses incidents or crimes committed to protect or defend the honour of the family and/or community, including FGM, forced marriage, and practices such as breast ironing.

Abuse committed in this context often involves a wider network of family or community pressure and can include multiple perpetrators.

All forms of HBA are abuse and will be handled and escalated as such. All staff will be alert to the possibility of a child being at risk of HBA or already having suffered it. If staff have a concern, they will speak to the DSL, who will activate local safeguarding procedures.

FGM

The DSL will make sure that staff have access to appropriate training to equip them to be alert to children affected by FGM or at risk of FGM.

Section 8 of this policy sets out the procedures to be followed if a staff member discovers that an act of FGM appears to have been carried out or suspects that a pupil is at risk of FGM.

Indicators that FGM has already occurred include:

- A pupil confiding in a professional that FGM has taken place
- A mother/family member disclosing that FGM has been carried out
- A family/pupil already being known to social services in relation to other safeguarding issues
- A girl:
 - Having difficulty walking, sitting or standing, or looking uncomfortable
 - Finding it hard to sit still for long periods of time (where this was not a problem previously)
 - Spending longer than normal in the bathroom or toilet due to difficulties urinating
 - Having frequent urinary, menstrual or stomach problems
 - Avoiding physical exercise or missing PE
 - Being repeatedly absent from school, or absent for a prolonged period
 - Demonstrating increased emotional and psychological needs – for example, withdrawal or depression, or significant change in behaviour
 - Being reluctant to undergo any medical examinations
 - Asking for help, but not being explicit about the problem
 - Talking about pain or discomfort between her legs

Potential signs that a pupil may be at risk of FGM include:

- The girl's family having a history of practising FGM (this is the biggest risk factor to consider)
- FGM being known to be practised in the girl's community or country of origin
- A parent or family member expressing concern that FGM may be carried out
- A family not engaging with professionals (health, education or other) or already being known to social care in relation to other safeguarding issues
- A girl:
 - Having a mother, older sibling or cousin who has undergone FGM
 - Having limited level of integration within UK society
 - Confiding to a professional that she is to have a "special procedure" or to attend a special occasion to "become a woman"
 - Talking about a long holiday to her country of origin or another country where the practice is prevalent, or parents stating that they or a relative will take the girl out of the country for a prolonged period
 - Requesting help from a teacher or another adult because she is aware or suspects that she is at immediate risk of FGM
 - Talking about FGM in conversation – for example, a girl may tell other children about it (although it is important to take into account the context of the discussion)
 - Being unexpectedly absent from school
 - Having sections missing from her 'red book' (child health record) and/or attending a travel clinic or equivalent for vaccinations/anti-malarial medication

The above indicators and risk factors are not intended to be exhaustive.

Forced marriage

Forcing a person into marriage is a crime. A forced marriage is one entered into without the full and free consent of one or both parties and where violence, threats, or any other form of coercion is used to cause a person to enter into a marriage. Threats can be physical or emotional and psychological.

Staff will receive training around forced marriage and the presenting symptoms. We are aware of the 'one chance' rule, i.e. we may only have one chance to speak to the potential victim and only one chance to save them.

If a member of staff suspects that a pupil is being forced into marriage, they will speak to the pupil about their concerns in a secure and private place. They will then report this to the DSL.

The DSL will:

- Speak to the pupil about the concerns in a secure and private place
- Activate the local safeguarding procedures and refer the case to the local authority's designated officer
- Seek advice from the Forced Marriage Unit on 020 7008 0151 or fmfu@fco.gov.uk
- Refer the pupil to an education welfare officer, pastoral tutor, learning mentor, or school counsellor, as appropriate

Preventing radicalisation

- **Radicalisation** refers to the process by which a person comes to support terrorism and extremist ideologies associated with terrorist groups
- **Extremism** is vocal or active opposition to fundamental British values, such as democracy, the rule of law, individual liberty, and mutual respect and tolerance of different faiths and beliefs. This also includes calling for the death of members of the armed forces
- **Terrorism** is an action that:

- Endangers or causes serious violence to a person/people;
- Causes serious damage to property; or
- Seriously interferes or disrupts an electronic system

The use or threat of terrorism must be designed to influence the government or to intimidate the public and is made for the purpose of advancing a political, religious or ideological cause.

Schools have a duty to prevent children from being drawn into terrorism. The DSL will undertake Prevent awareness training and make sure that staff have access to appropriate training to equip them to identify children at risk. We will assess the risk of children in our school being drawn into terrorism. This assessment will be based on an understanding of the potential risk in our local area, in collaboration with our local safeguarding partners and local police force.

We will ensure that suitable internet filtering is in place, and equip our pupils to stay safe online at school and at home. There is no single way of identifying an individual who is likely to be susceptible to an extremist ideology. Radicalisation can occur quickly or over a long period.

Staff will be alert to changes in pupils' behaviour.

The government website [Educate Against Hate](#) and charity [NSPCC](#) say that signs that a pupil is being radicalised can include:

- Refusal to engage with, or becoming abusive to, peers who are different from themselves
- Becoming susceptible to conspiracy theories and feelings of persecution
- Changes in friendship groups and appearance
- Rejecting activities they used to enjoy
- Converting to a new religion
- Isolating themselves from family and friends
- Talking as if from a scripted speech
- An unwillingness or inability to discuss their views
- A sudden disrespectful attitude towards others
- Increased levels of anger
- Increased secretiveness, especially around internet use
- Expressions of sympathy for extremist ideologies and groups, or justification of their actions
- Accessing extremist material online, including on Facebook or Twitter
- Possessing extremist literature
- Being in contact with extremist recruiters and joining, or seeking to join, extremist organisations

Children who are at risk of radicalisation may have low self-esteem, or be victims of bullying or discrimination. It is important to note that these signs can also be part of normal teenage behaviour – staff should have confidence in their instincts and seek advice if something feels wrong.

If staff are concerned about a pupil, they will follow our procedures set out in section 7.5 of this policy, including discussing their concerns with the DSL.

Staff should **always** take action if they are worried.

Further information on the school's measures to prevent radicalisation are set out in other school policies and procedures.

Checking the identity and suitability of visitors

All visitors will be required to verify their identity to the satisfaction of staff and to leave their belongings, including their mobile phone(s), in a safe place during their visit.

If the visitor is unknown to the setting, we will check their credentials and reason for visiting before allowing them to enter the setting. Visitors should be ready to produce identification.

Visitors are expected to sign the visitors' book and wear a visitor's badge.

Visitors to the school who are visiting for a professional purpose, such as educational psychologists and school improvement officers, will be asked to show photo ID and:

- Will be asked to show their DBS certificate, which will be checked alongside their photo ID; or
- The organisation sending the professional, such as the LA or educational psychology service, will provide prior written confirmation that an enhanced DBS check with barred list information has been carried out

All other visitors, including visiting speakers, will be accompanied by a member of staff at all times. We will not invite into the school any speaker who is known to disseminate extremist views, and will carry out appropriate checks to ensure that any individual or organisation using school facilities is not seeking to disseminate extremist views or radicalise pupils or staff.