

# THE STOKE POGES SCHOOL

## Child Protection and Safeguarding Policy

<b>Governors Committee Responsible for the Policy</b>	Full Governing Board
<b>Date Approved</b>	September 2021
<b>Recommended Review Period</b>	One year
<b>Date for Review</b>	September 2022
<b>Person Responsible for the Policy</b>	Headteacher

### 1. Contacts

#### School contacts

<b>Headteacher</b>	Liz Astley <a href="mailto:head@stokepoges.school">head@stokepoges.school</a> 01753 643 319
<b>Designated Safeguarding Lead (DSL)</b>	As above
<b>Deputy Designated Safeguarding Lead</b>	Amanda Benians <a href="mailto:ABenians@stokepoges.school">ABenians@stokepoges.school</a> 01753 643 319
<b>Nominated Safeguarding Governor</b>	Ed Bramley-Harker
<b>Chair of Governors</b>	Ed Bramley-Harker <a href="mailto:office@stokepoges.school">office@stokepoges.school</a>

#### Contacts in County

<b>Education Safeguarding Advisory Service</b> ESAS offers support to education providers to assist them to deliver effectively on all aspects of their safeguarding responsibilities.	01296 387981
<b>First Response Team (including Early Help, Channel)</b> The First Response Team process all new referrals to social care, including children with disabilities. Referrals are assessed by the team to check the seriousness and urgency of the concerns and whether Section 17 and/or Section 47 of the Children Act 1989 apply. The First Response Team will ensure that the referral reaches the appropriate team for assistance in a quick and efficient manner.	01296 383962 Out of hours 0800 999 7677
<b>Local Authority Designated Officer (LADO)</b> The Buckinghamshire Local Authority Designated Officer (LADO) is responsible for overseeing the management of all allegations against people in a position of trust who work with children in Buckinghamshire on either a paid or voluntary basis	01296 382070
<b><a href="#">Bucks Family Information Service</a></b> Information for families on a range of issues including childcare, finances, parenting and education	01296 383065
<b><a href="#">Buckinghamshire Safeguarding Children Partnership (BSCP)</a></b> Procedures, policies and practice guidelines	
<b><a href="#">Schools Web</a></b> School bulletin, Safeguarding links, A-Z guide to information and services	
<b>Buckinghamshire Council Equalities &amp; School Improvement Manager</b>	01296 382461
<b>Buckinghamshire Council Prevent Co-ordinator</b>	01296 674784
<b>Thames Valley Police</b>	101 (999 in case of emergency)

## Other contacts

<a href="#">NSPCC</a> <a href="#">NSPCC</a>	0800 800 5000
Childline <a href="#">Childline</a>	0800 11 11
Kidscape – Parent Advice Line (bullying) (Mon-Weds from 9:30am to 2:30pm) <a href="#">Kidscape</a>	020 7823 5430
Female Genital Mutilation Helpline (NSPCC) <a href="#">NSPCC FGM Helpline</a>	0800 028 3550 <a href="mailto:fgmhelp@nspcc.org.uk">fgmhelp@nspcc.org.uk</a>
Samaritans - Helpline <a href="#">Samaritans</a>	116 123
Forced Marriages Unit - Foreign and Commonwealth Office <a href="#">Forced marriage - GOV.UK</a>	020 7008 0151 <a href="mailto:fmufco.gov.uk">fmufco.gov.uk</a>
Crimestoppers <a href="#">Crimestoppers</a>	0800 555 111
R-U Safe? Barnardos - Children/Young People Sexual Exploitation Service <a href="#">Barnardos RUSafe Bucks</a>	01494 785 552
<a href="#">CEOP</a> (Child Exploitation and Online Protection)	

This policy should be read in conjunction with the following policies and other policies you feel it would be useful to refer to:

Anti-bullying  
Attendance  
Behaviour  
Children Looked After  
Equalities  
Lettings  
SEN/Inclusion  
Health & Safety (including managing children with medical needs)  
Photography  
E-Safety (including use of social media)  
Staff Code of Conduct  
PSHE - to include RE & RSE  
Visitors  
Whistleblowing  
Mobile Phone  
Record Keeping

## Definitions

Safeguarding and promoting the welfare of children means:

- Protecting children from maltreatment
- Preventing impairment of children's mental and physical health or development
- Ensuring that children grow up in circumstances consistent with the provision of safe and effective care
- Taking action to enable all children to have the best outcomes

Child protection is part of the safeguarding process and it refers to the procedures undertaken to protect individual children who have been identified as suffering or likely to suffer significant harm.

Abuse is a form of maltreatment of a child and may involve inflicting harm or failing to act to prevent harm. Further information regarding the categories of abuse can be found in the appendix to this document.

Children includes everyone under the age of 18.

The following 3 **safeguarding partners** are identified in Keeping Children Safe in Education (and defined in the Children Act 2004, as amended by chapter 2 of the Children and Social Work Act 2017). They will

make arrangements to work together to safeguard and promote the welfare of local children, including identifying and responding to their needs:

- The local authority (LA)
- A clinical commissioning group for an area within the LA
- The chief officer of police for a police area in the LA area

## **2. Introduction**

At The Stoke Poges School we believe that a policy on child protection is founded on the right of all children to be safe. We expect all members of the school community including staff, governors, supply staff and volunteers to share this commitment. Every member of the school community is responsible for contributing to a positive culture of safeguarding.

The aim of this policy is to provide staff, supply staff, governors and volunteers with the framework they need to keep children in The Stoke Poges School safe and secure and to provide parents and carers with the information about how we will safeguard their children whilst in our care.

This policy has been developed in accordance with following legislation and guidance:

- Children Act 1989 (amended 2004)
- “Working Together to Safeguard Children 2018” - July 2018 [Working Together To Safeguard Children July 2018](#)
- “Keeping Children Safe in Education”- statutory guidance for schools and further education colleges - Sept 2021 [Keeping Children in Education 2021](#)
- Information Sharing Guidance for Safeguarding Practitioners [Information Sharing Guidance](#) – DfE July 2018
- Children Missing Education; Statutory Guidance for Local Authorities - Sept 2016 [Children missing education - GOV.UK](#)
- Statutory Guidance issued under section 29 of the Counter-Terrorism and Security Act - 2015 [Prevent Duty Guidance](#)
- Sexual Violence and Sexual Harassment between Children in Schools and Colleges – Sept 2021 [Sexual Violence and Sexual Harassment between Children in Schools and Colleges](#)
- The Equality Act - 2010 [Equality Act 2010: guidance - GOV.UK](#)
- What to do if you're worried a child is being abused - March 2015 [What to do if you are worried a child is being abused](#)
- Statutory guidance on FGM [Multi-agency Statutory Guidance on Female Genital Mutilation](#)

We believe clear governance and leadership is central to embedding a safeguarding culture. The Governing Board takes its responsibility seriously under **section 175 of the Education Act 2002** to safeguard and promote the welfare of children; working together with other agencies to ensure effective and robust arrangements are in place within our school to identify and support those children who are suffering harm or whom may be at risk of harm. Governors will ensure all staff at the school have read and understood their responsibilities pertaining to **Part 1, Part 5 and Annexe B of Keeping Children Safe in Education, Sept 2021**.

All staff are required to read and adhere to the **Staff Code of Conduct**.

The school recognises that as well as risks to the welfare of children from within their families, children may be vulnerable to abuse or exploitation outside their homes and from other children. Staff must remain vigilant and alert to these potential risks.

The aims of this policy are:

- To provide an environment in which children feel safe, secure, valued and respected.
- Children feel confident that they can talk to adults within school to share any concerns that they may have.
- To ensure all teaching staff, non-teaching staff, supply staff, governors and volunteers:
  - are aware of the need to safeguard and promote the wellbeing of children
  - identify the need for early support

- promptly report concerns, in line with guidance from the Buckinghamshire Continuum of Need
- are trained to recognise signs and indicators of abuse.
- For all staff to recognise that safeguarding and promoting the welfare of children is defined as:
  - Protecting children from maltreatment
  - Preventing impairment of children’s mental and physical health or development
  - Ensuring that children grow up in circumstances consistent with the provision and effective care
  - Taking action to enable all children to have the best outcomes.
- To provide systematic means of monitoring children known to be, or thought to be at risk of harm and ensure contribution to assessments of need and support plans for those children.
- To ensure The Stoke Pogge School has a clear system for communicating concerns both internally and with external agencies in line with the Working Together guidance.
- To ensure the school has robust systems in place to accurately record safeguarding and child protection concerns.
- To develop effective working relationships with all other agencies involved in safeguarding, supporting the needs of children at our school.
- To ensure that all staff appointed have been through the safer recruitment process and understand the principles of safer working practices as set out in our **Staff Code of Conduct**.
- To ensure that any community users of our facilities have due regard to expectations of how they should maintain a safe environment, which supports children’s wellbeing.
- This policy is published on our website, and hard copies are available from the school office.

### **3. Responsibilities**

All staff, supply staff, volunteers, visitors, governors and contractors understand safeguarding children is everyone’s responsibility. This policy is consistent with the procedures of the 3 safeguarding partners. Our policy and procedures also apply to extended school and off-site activities.

Any person who receives a disclosure of abuse, an allegation or suspects that abuse may have occurred must report it immediately to Liz Astley (Designated Safeguarding Lead; DSL) or, in her absence, to Amanda Benians (Deputy DSL). In the absence of either of the above, concerns will be brought to the attention of the most senior member of staff on site. Staff understand that if there is an immediate risk of harm then the police or First Response will be called directly and the DSL will be updated at the earliest opportunity. **Anyone can make a referral.**

Staff must maintain a good working knowledge of the Buckinghamshire Continuum of Need [The Continuum of Need - Buckinghamshire Safeguarding Children Partnership \(buckssafeguarding.org.uk\)](https://www.buckssafeguarding.org.uk) and any updates and how it should be used to inform decision making regarding a referral to First Response.

Staff have the skills, knowledge and understanding to keep both looked after children and previously looked after children safe.

Staff understand vulnerability and that barriers exist when recognising abuse and neglect for children. They consider the following groups who may have increased vulnerability:

- Young carers
- Children with SEND
- Children living with domestic abuse
- Children whose parents suffer with poor mental health, including substance misuse
- Criminal exploitation, including sexual exploitation, radicalisation and gang involvement
- Look after children and previously look after children
- Children who have a social worker
- Privately fostered children
- Asylum seekers
- So-called Honour Based Violence, including FGM and forced marriage
- Children who frequently go missing or whose attendance is a concern
- Children who are part of the LGBTQ group or who are exploring gender identification

- Children who are at risk of discrimination due to faith and belief, race or ethnicity
- Whose parent/carer has expressed an intention to remove them from school to be home educated

### All staff

All staff are expected to read and understand at least Part 1 of Keeping Children Safe in Education, and review this guidance at least annually.

All staff will sign a declaration at the beginning of each academic year to say that they have reviewed and understood the guidance.

All staff will be aware of:

- Our systems which support safeguarding, including this child protection and safeguarding policy, the staff code of conduct, the role and identity of the designated safeguard lead (DSL) and deputy, the behaviour policy and the safeguarding response to children who go missing from education
- The early help process and their role in it, including identifying emerging problems, liaising with the DSL, and sharing information with other professionals to support early identification and assessment
- The process for making referrals to local authority children's social care and for statutory assessments that may follow a referral, including the role they might be expected to play
- What to do if they identify a safeguarding issue or a child tells them they are being abused or neglected, including specific issues such as FGM, and how to maintain an appropriate level of confidentiality while liaising with relevant professionals
- The signs of different types of abuse and neglect, as well as specific safeguarding issues, such as peer-on-peer abuse, child sexual exploitation (CSE), child criminal exploitation (CCE), indicators of being at risk from or involved with serious violent crime, FGM and radicalisation
- The importance of reassuring victims that they are being taken seriously and that they will be supported and kept safe

### Governing Board

The Governing Board understands and fulfils its safeguarding responsibilities. It must:

- Ensure that the Headteacher and (when not the Headteacher) the DSL create and maintain a strong, positive culture of safeguarding within the school.
- Ensure that this policy reflects the unique features of the community we serve and the needs of the pupils attending our provision. This policy will be reviewed at least annually.
- Regularly monitor and evaluate the effectiveness of this Child Protection Policy.
- Appoint a Designated Safeguarding Lead (DSL), who is a member of the Senior Leadership Team (SLT) and has the required level of authority and also appoint at least one Deputy DSL. The Headteacher has overall responsibility for safeguarding within the school. The roles and responsibilities of the DSL and Deputy DSL are made explicit in those post-holders' job descriptions.
- Recognise the importance of the role of the DSL, ensuring they have sufficient time, training, skills and resources to be effective. Refresher training must be attended every 2 years, in addition knowledge and skills must be refreshed at regular intervals, at least annually.
- Ensure measures are in place for the governing board to have oversight of how the school's delivery against its safeguarding responsibilities are exercised and evidenced. Ensure robust structures are in place to challenge the Headteacher where there are any identified gaps in practice or procedures are not followed.
- Recognise the vital contribution that the school can make in helping children to keep safe, through incorporation of safeguarding within the curriculum. This will also be taught through the PSHE curriculum and relevant issues through the Relationship Education (primary schools) or Relationship Sex Education (secondary schools, mandatory from Sept. 2020). Ensure that through curriculum content and delivery children understand to keep themselves safe.
- Ensure that school is following the statutory RSE guidance – [Relationships and sex education \(RSE\) and health education - GOV.UK \(www.gov.uk\)](#)
- Ensure safe and effective recruitment policies and disciplinary procedures are in place.
- Ensure resources are allocated to meet the needs of pupils requiring child protection or early intervention.
- Ensure the DSL completes an Annual Safeguarding Report for Governors and a copy is shared with the Education Safeguarding Advisory Service at Buckinghamshire Council.

It is the duty of the Chair of Governors (Ed Bramley-Harker) to liaise with relevant agencies if any allegations are made against the Headteacher. If there are concerns that issues are not being progressed in an expedient manner, staff/pupils/parents/carers should escalate concerns to the Local Authority Designated Officer (LADO) via First Response.

The Governing Board must ensure that procedures are in place to manage safeguarding concerns of allegations against staff, supply staff, governors, volunteers, visitors or contractors where they could pose a risk of harm to children. The guidance in Part four of Keeping Children Safe in Education 2021 must be followed if there were any such concerns. [Keeping Children Safe in Education 2021](#)

The Governing Board must ensure that a named teacher is designated for Children Looked After and that an up to date list of children who are subject to a Care Order or are accommodated by the County Council is regularly reviewed and updated. The school must work with the Virtual Schools Team to support the educational attainment for those children who are Looked After.

The Governing Board has a statutory duty to appoint a Nominated Governor for safeguarding. The Nominated Governor must be familiar with [Buckinghamshire Safeguarding Children Partnership](#) procedures, Local Authority procedures and guidance issued by the Department for Education. The Nominated Governor must:

- Work with the DSL to produce the Child Protection Policy annually.
- Undertake appropriate safeguarding training, to include Prevent training.
- Ensure child protection is regularly discussed at Governing Board meetings
- Meet at least termly with the DSL to review and monitor the school's delivery on its safeguarding responsibilities and to review the Single Central Record.
- Take responsibility to ensure that the school is meeting the OFSTED requirements as set out in the inspection guidance:  
[Inspecting safeguarding in early years, education and skills settings](#)  
[Education inspection framework \(EIF\) - GOV.UK \(www.gov.uk\)](#)

All governors must complete safeguarding training on appointment, to also include Prevent training. The Governing Board must ensure that relevant staff have due regard to the relevant data protection principles set out in the Data Protection Act 2018 and the GDPR, which allow them to share or withhold personal information when it is necessary to safeguard any child.

All governors will read Keeping Children Safe in Education in its entirety.

### Designated Safeguard Lead

We have a Designated Safeguarding Lead (DSL) who is responsible for:

- Creating a culture of safeguarding within the school, where children are protected from harm.
- Ensuring all staff receive an effective induction and ongoing training to support them to recognise and report any concerns.
- Ensuring children receive the right help at the right time using the Buckinghamshire Continuum of Need document.
- Ensuring referrals to partner agencies are followed up in writing, including referrals to First Response.
- Establishing a safe and secure system for recording safeguarding and child protection records. These records must be audited regularly to ensure all actions are completed.
- Ensuring all child protection files are held separately from pupils' educational records.
- Maintaining the record for staff safeguarding training. Ensuring that the safeguarding team contact details and photos are displayed in prominent areas around the school and also on the website.
- Being the designated point of contact for staff to be able to discuss and share their concerns.
- Being available to staff and outside agencies during school hours and term time for consultation on safeguarding concerns raised.
- Having responsibility to ensure that cover is arranged outside of term-time during working hours.
- During residential and extended school hours, ensuring arrangements are in place for staff to have a point of contact.

- Contributing effectively to multiagency working, for the safeguarding and promotion of the welfare of children, as set out in Working Together.
- Providing the Headteacher (if the Headteacher is not the DSL), with an annual report for the Governing Board, detailing how school delivers on its safeguarding responsibilities and any child protection issues within the school. The Governing Board will use this report to fulfil its responsibility to provide the Local Authority with information about their safeguarding policies and procedures.
- Meeting regularly termly with the Nominated Governor to share oversight of the safeguarding provision within the setting, monitor performance and develop plans to rectify any gaps in policy or procedure.
- Meeting the statutory requirement to keep up to date with knowledge, enabling them to fulfil their role, including attending mandatory and any other additional relevant training.
- Referring immediately to the Police, using the guidance, When to call the police, [2491596 C&YP schools guides.indd \(npcc.police.uk\)](#), for any cases where a criminal offence may have been committed or risk of harm is imminent.

### The Headteacher

The Headteacher is responsible for the implementation of this policy, including:

- Ensuring that staff (including temporary staff) and volunteers:
  - Are informed of our systems which support safeguarding, including this policy, as part of their induction
  - Understand and follow the procedures included in this policy, particularly those concerning referrals of cases of suspected abuse and neglect
- Communicating this policy to parents/carers when their child joins the school and via the school website
- Ensuring that the DSL has appropriate time, funding, training and resources, and that there is always adequate cover if the DSL is absent
- Ensuring that all staff undertake appropriate safeguarding and child protection training, and updating the content of the training regularly
- Acting as the 'case manager' in the event of an allegation of abuse made against another member of staff or volunteer, where appropriate
- Ensuring the relevant staffing ratios are met, as appropriate

### 4. Procedures

Our school procedures for all staff, supply staff, governors, volunteers, visitors and contractors in safeguarding and protecting children from harm are in line with Buckinghamshire Council and [Buckinghamshire Safeguarding Children Partnership](#) safeguarding procedures, “**Working Together to Safeguard Children 2018**” [Working Together to Safeguard Children 2018](#), “**Keeping Children Safe in Education 2021**” [Keeping children safe in education 2021 \(publishing.service.gov.uk\)](#) and statutory guidance issued under section 29 of the **Counter-Terrorism and Security Act 2015** [Revised Prevent duty guidance: for England and Wales - GOV.UK \(www.gov.uk\)](#).

We will ensure:

- We have a designated member of the Senior Leadership Team who has undertaken appropriate training for the role, as recommended by the BSCP. Our Designated Safeguarding Lead (DSL) will be required to update their training in accordance with the Learning Pathway agreed by the BSCP.
- We have a member of staff who will act in the DSL's absence and who has also received training for the role of DSL. In the absence of an appropriately trained member of staff, the most senior member of staff on site will assume this role.
- All adults (including supply teachers, volunteers and contractors) new to our school are made aware of the school's policy and procedures for child protection, the name and contact details of the DSL, their role and responsibilities under “**Keeping Children Safe in Education 2021**” [Keeping children safe in education 2021 \(publishing.service.gov.uk\)](#) and the booklet “**What to do if You're Worried a Child is Being Abused**” [Stat guidance template \(publishing.service.gov.uk\)](#). They will have these explained, as part of their induction into the school.
- Visitors must be:
  - Clearly identified with visitor/contractor lanyards.

- Met and directed by school staff/representatives.
- Signed in and out of the school by school staff.
- Given a safeguarding leaflet to read of how to report a concern.
- Given restricted access to only specific areas of the school, as appropriate.
- Escorted by a member of staff/representative as required.
- Given access to pupils restricted to the purpose of their visit.
- All members of staff must complete regular safeguarding training, attend regular refresher training and partake in any training opportunities arranged or delivered by the DSL. Updates must be cascaded to all staff throughout the year, at a minimum of once a year.
- All parents/carers must be made aware of the school's responsibilities in regard to child protection procedures through this policy.

All staff, including supply staff, must follow the reporting procedures as follows when reporting any child protection concerns:

- Staff must ensure the child is in a safe place and in receipt of support;
- Staff must initially make a verbal report to the DSL to alert them to the safeguarding/child protection concern;
- Staff must make a written report using the school record keeping process (CPoms);
- All concerns should be located on CPoms;
- Staff must ensure the time and date of the incident is recorded;
- A factual account of the incident must be recorded, including who was involved, what was said/seen/heard, where the incident took place and any actual words or phrases used by the child;
- Use a body map to record any injuries seen or reported by the child;
- The DSL must record what action was taken alongside any outcomes achieved.
- The DSL must ensure the child's wishes and feelings are taken into consideration when deciding on next steps.

Through our **Attendance Policy**, we have a robust system for monitoring attendance and will act to address absenteeism with parents/carers and pupils promptly and identify any safeguarding issues arising.

All children attending our school are required to have a minimum of two identified emergency contacts.

Any pupil whose absence is causing concern and where it has not been possible to make contact with a parent/carer, will be reported as a Child Missing in Education (CME) using the **Buckinghamshire CME Protocol**.

Any absence, of a pupil who is currently subject to a child protection or child in need plan is immediately referred to their social worker.

Parents/carers must inform school if there are any changes to a pupil's living arrangement. The Stoke Poges School has a mandatory duty to inform the local authority, via the First Response Team, if a child under the age of 16 years old lives with someone other than their parent, step-parent, aunt, uncle or grandparent for a period of more than 28 days. This is defined as being a private fostering arrangement.

All staff, parents/carers and children are made aware of the school's escalation process, which can be activated in the event of concerns not being resolved after the first point of contact.

Our lettings policy reflects the ongoing responsibility the school has for safeguarding those using the site outside of normal school hours, ensuring the suitability of adults working with children on school sites at any time. School must have sight of the up to date **Child Protection Policy** of any organisation hiring the school's facilities.

The school operates **Safer Recruitment** practices.

Allegations against members of staff, supply staff, governors, including volunteers and contractors are referred to the Local Authority Designated Officer (LADO).

Our procedures are reviewed and updated annually as a minimum, or as there are changes to legislation.



## **5. Record-Keeping and Retention of Records**

When a disclosure of abuse or an allegation against a member of staff or volunteer has been made, our school must have a record of this. These records are maintained in a way that is confidential and secure, in accordance with our **Record Keeping Policy** and **Data Protection Legislation**.

Records should include:

- a clear and comprehensive summary of the concern;
- details of how the concern was followed up and resolved;
- a note of any action taken, decisions reached and the outcome.

There is a statutory requirement for our school to pass any child protection records to the pupil's next school. There must be an auditable system in place to evidence this has taken place. Safeguarding records will be sent separately from the general files using a secure method.

The last statutory school maintains child protection files until a pupil reaches the age of 25 years, therefore if the transfer school is unknown, or a pupil is going to be electively home educated, any child protection files will remain at our school in a secure location. Child protection files will only be destroyed when the pupil reaches their 25th birthday.

We have a robust system for reviewing our archived information held. Our files are stored and disposed of in line with GDPR protocols.

## **6. Confidentiality**

We recognise that all matters relating to child protection are confidential.

The Headteacher or Designated Safeguarding Lead must only disclose personal information about a pupil to other members of staff on a need to know basis.

Staff must not keep duplicate or personal records of child protection concerns. All information must be reported to the Designated Safeguarding Lead and securely stored in the designated location within the school, separate from the pupil records.

All staff are aware they cannot promise a child to keep secrets which might compromise the child's safety or well-being or that of another as they have a duty to share. Staff must, however, reassure the child that information will only be shared with those people who will be able to help them and therefore need to know.

We will always undertake to share our intention to refer a child to Social Care (First Response) with their parent/carer's consent, unless to do so could put the child at greater risk of harm or impede a criminal investigation. If in doubt, we will consult with First Response on this point. We recognise that GDPR must not be a barrier for sharing information regarding safeguarding concerns in line with '**Working Together**'.

## **7. Dealing with a disclosure**

In the event of a child disclosing abuse staff must:

- Listen to the child, allowing the child to tell what has happened in their own way, and at their own pace. Staff must not interrupt a child who is freely recalling significant events.
- Remain calm. Be reassuring and supportive, endeavouring to not respond emotionally.
- Not ask leading questions. Staff are reminded to ask questions only when seeking clarification about something the child may have said or to gain sufficient information to know that this is a safeguarding concern. Staff are trained to use TED; Tell, Explain, Describe.
- Make an accurate record of what they have seen/heard using the school's record keeping processes, recording times, dates or locations mentioned, using as many words and expressions used by the child, as possible.
- Staff must not substitute anatomically correct names for body part names used by the child.
- Reassure the child that they did the right thing in telling someone.

- Staff must explain to the child what will happen next and the need for the information to be shared with the DSL.

In the unlikely event the DSL and deputy DSL not being available, staff are aware they must share concerns with the most senior member of staff.

**If there is immediate risk of harm to a child, staff will NOT DELAY and should take advice from local authority children's social care.** They should then share details of any actions with the DSL as soon as practically possible.

The child will be monitored/accompanied at all times following a disclosure, until a plan is agreed as to how best they can be safeguarded.

Following a report of concerns the DSL must:

- Decide whether there are sufficient grounds for suspecting significant harm, in which case a referral must be made to First Response and the police if it is appropriate, referring to the guidance, When to call the police, [2491596 C&YP schools guides.indd \(npcc.police.uk\)](#) The rationale for this decision should be recorded by the DSL.

If there are grounds to suspect a child is suffering or is likely to suffer significant harm, the DSL (or Deputy) must contact First Response by telephone immediately, in first instance and then complete the Multi Agency Referral Form (MARF).

If the child is in immediate danger and urgent protective action is required, the police must be called. The DSL must then notify First Response of the occurrence and what action has been taken.

If a child needs urgent medical attention, the DSL (or Deputy) should call an ambulance via 999. DSL to contact First Response; advice to be sought from First Response about informing parents/carers.

#### Making a referral

If it is appropriate to refer the case to local authority children's social care or the police, the DSL will make the referral or support you to do so.

If you make the referral directly, you must tell the DSL as soon as possible.

The local authority will make a decision within 1 working day of a referral about what course of action to take and will let the person who made the referral know the outcome. The DSL or person who made the referral must follow up with the local authority if this information is not made available, and ensure outcomes are properly recorded.

If the child's situation does not seem to be improving after the referral, the DSL or person who made the referral must follow local escalation procedures to ensure their concerns have been addressed and that the child's situation improves.

#### Notifying parents or carers

The DSL should try to discuss any concerns about a child's welfare with parents/carers and, where possible, obtain consent before making a referral to First Response. However, in accordance with DfE guidance, this should only be done when it will not place the child at increased risk or could impact a police investigation. Where there are doubts or reservations about involving the child's family, the DSL should clarify with First Response or the police whether the parents/carers should be told about the referral and, if so, when and by whom. This is important in cases where the police may need to conduct a criminal investigation. The child's views should also be taken into account.

Other staff will only talk to parents or carers about any such concerns following consultation with the DSL.

In the case of allegations of abuse made against other children, we will normally notify the parents or carers of all children involved.

## **8. Multi-agency working**

The Stoke Poges School know what the role of the school is, as a relevant agency, within the three safeguarding partner arrangements and as required, will contribute to multi-agency working, in line with the statutory guidance 'Working Together to Safeguard Children'.

When named as a relevant agency and involved in safeguarding arrangements, The Stoke Poges School will co-operate alongside other agencies with the published arrangements.

The Stoke Poges School will contribute to inter-agency plans to offer children support of early help and those children supported through child protection plans.

The Stoke Poges School will allow access for and work with children's social care to conduct or consider whether to conduct as section 17 or section 47 assessment.

### **Early help**

If early help is appropriate, the DSL will generally lead on liaising with other agencies and setting up an inter-agency assessment as appropriate. Staff may be required to support other agencies and professionals in an early help assessment, in some cases acting as the lead practitioner.

The DSL will keep the case under constant review and the school will consider a referral to local authority children's social care if the situation does not seem to be improving. Timelines of interventions will be monitored and reviewed.

## **9. Supporting staff**

We recognise that staff becoming involved with a child who has suffered harm, or appears to be likely to suffer harm, could find the situation stressful and upsetting.

We will support such staff by providing an opportunity to talk through their anxieties with the DSL and to seek further support if necessary. This could be provided by the Headteacher or another trusted colleague, Occupational Health, and/or a representative of a professional body, Employee Assistance Programme (PAM) or trade union, as appropriate.

## **10. Allegations against staff, supply staff, volunteers and contractors (including Governors)**

Here at The Stoke Poges School, we have our own procedures for managing concerns and/or allegations against those working in school to include staff, supply teacher, volunteers and contractors.

KCSIE 2021- Part four contains comprehensive guidance covering the two levels of allegations/concern:

1. Allegations that may meet the harms threshold
2. Allegations/concerns that do not meet the harms threshold- referred to for the purpose of this guidance as 'low level concerns'.

All school staff, supply staff, volunteers and contractors must take care not to place themselves in a vulnerable position with a child. It is always advisable for interviews or work with individual children or parents/carers to be conducted in view of other adults.

We understand that a pupil may make an allegation against a member of staff, member of supply staff, volunteer or contractor. If such an allegation is made, the member of staff notified of the allegation will immediately inform the Headteacher or the most senior teacher if the Headteacher is not present. If the allegation is made against the Headteacher, the Chair of Governors must be informed.

At The Stoke Poges School, we recognise that an allegation may be made if a member of staff, a member of supply staff, a volunteer or a contractor has:

- Behaved in a way that has harmed a child, or may have harmed a child
- Possibly committed a criminal offence against or related to a child

- Behaved towards a child or children in a way that indicates he or she may pose a risk of harm to children
- Behaved or may have behaved in a way that indicates they may not be suitable to work with children. This includes behaviours both inside and outside of school.

The Headteacher (or Senior Leader) on all such occasions must immediately discuss the content of the allegation with the Local Authority Designated Officer (LADO).

The Headteacher (or Senior Leader) must:

- Follow all advice given by the LADO throughout the investigation process, including how to manage the staff member, supply staff member, volunteer or contractor against whom the allegation is made, as well as supporting other staff, supply staff members, volunteers and contractors within the workplace.
- Follow all advice given by the LADO relating to supporting the child making the allegation, as well as other children connected to the organisation.
- Ensure feedback is provided to the LADO about the outcome of any internal investigations.
- The school will follow the local safeguarding procedures for managing allegations against staff, supply staff, volunteers and contractors. If the allegation is made against a member of staff supplied by an external agency, the agency will be fully kept fully informed and involved in any enquiries from the LADO.
- Suspension of the member of staff against whom an allegation has been made needs careful consideration and, if necessary, we will consult with the LADO in making this decision. Guidance will also be sought from HR.
- If a suspension is made, restrictions will apply to all staff, supply staff, volunteers and contractors regarding contact with them whilst they are suspended, including contact via social media, such as Facebook and Twitter.

Our lettings agreement for other users requires that the organiser will follow the Buckinghamshire Council procedures for managing allegations against staff and where necessary, the suspension of adults from school premises.

Should an individual staff member, supply staff member, governor, volunteer or contractor be involved in child protection, other safeguarding procedures or Police investigations in relation to abuse or neglect, they must immediately inform the Head Teacher. In these circumstances, the school will need to assess whether there is any potential for risk of transfer to the workplace and the individual's own work with children.

### **11. Whistleblowing**

We have a **Whistleblowing Policy** which can be found in Statutory Policy Documents on g-drive. Staff are required to familiarise themselves with this document during their induction period.

All staff must be aware of their duty to raise concerns about the attitude or actions of colleagues and report their concerns to the Headteacher or Chair of Governors.

### **12. Physical intervention/Positive handling**

Our policy on physical intervention/positive handling by staff is set out separately, as part of our **Behaviour Policy**.

### **13. Anti-Bullying**

Anti-Bullying is referenced within the **Anti-Bullying Policy** and measures are in place to prevent and respond to all forms of bullying, which acknowledges that to allow or condone bullying may lead to consideration under child protection procedures.

### **14. Discriminatory Incidents**

In line with the **Equalities Act 2010**, our **Equalities Policy** addresses all forms of discriminatory incidents.

## **15. Health and Safety**

We recognise the importance of safeguarding pupils throughout the school day. Our **Health and Safety Policy** reflects the consideration we give to the protection of our children, both physically and emotionally, within the school environment.

Part of the safeguarding measures we have in place include the safe dropping off and collection of pupils at the start and end of the school day.

Pupils who leave the site during the school day do so only with the written permission of a parent/carer and are collected by an authorised adult where appropriate. School should be notified by the parents/carers regarding whom they have authorised for this task. Children must be signed in and out at the reception desk.

At the end of extra-curricular activities, all children must be handed over to their named adult. Some of our older children do walk to and from school and the school seeks written permission from parents before allowing them to do so.

In the event of a pupil going missing during the course of the school day we will carry out immediate checks to ensure the pupil is not on site, we will then make contact with the pupil's parents/carers and inform the police.

## **16. Prevent Duty**

We are aware of the Prevent Duty under **Section 26 of the Counter Terrorism and Security Act 2015** to protect young people from being drawn into terrorism.

All school staff and governors have completed Prevent training.

We have in place and monitor appropriate web filtering systems.

The DSLs and senior leaders are familiar with their duties under The Prevent Duty Guidance: [Revised Prevent duty guidance: for England and Wales - GOV.UK \(www.gov.uk\)](#)

If a child is suffering or likely to suffer from harm, or in immediate danger, where possible a member of staff should speak to the DSL first to agree a course of action.

Where there is a concern, the DSL will consider the level of risk and decide which agency to make a referral to. This could include Channel, the government's programme for identifying and supporting individuals at risk of being drawn into terrorism, or the local authority children's social care team.

The Department for Education also has a dedicated telephone helpline, 020 7340 7264, which school staff and governors can call to raise concerns about extremism with respect to a pupil. You can also email [counter.extremism@education.gov.uk](mailto:counter.extremism@education.gov.uk) Note that this is not for use in emergency situations.

In an emergency, call 999 or the confidential anti-terrorist hotline on 0800 789 321 if you:

- Think someone is in immediate danger
- Think someone may be planning to travel to join an extremist group
- See or hear something that may be terrorist-related

## **17. Online Safety**

All staff are aware of the school policy for **Online-Safety** which sets out our expectations relating to:

- Creating a safer online learning environment
- Giving everyone the skills, knowledge and understanding to help children stay safe on-line, question the information they are accessing and support the development of critical thinking

- Inspiring safe and responsible use of mobile technologies, to combat behaviours on-line which may make pupils vulnerable, including the sending of nude or semi-nude images
- Use of camera equipment, including smart phone
- What steps to take if there are concerns and where to go for help
- Staff use of social media as set out in the **Staff Code of Conduct**
- Cyber-bullying by children, via texts, social media and emails, will be treated as seriously as any other type of bullying and will be managed through our anti-bullying procedures
- School are aware of the risks posed by children in the online world; in particular non-age appropriate content linked to self-harm, suicide, grooming and radicalisation

Pupils, staff and parents/carers are supported to understand the risks posed by:

- the CONTENT accessed by pupils – being exposed to illegal, inappropriate or harmful content, such as pornography, fake news, racism, misogyny, self-harm, suicide, anti-Semitism, radicalisation and extremism
- their CONDUCT on-line – being subjected to harmful online interaction with other users, such as peer-on-peer pressure, commercial advertising and adults posing as children or young adults with the intention to groom or exploit them for sexual, criminal, financial or other purposes
- who they have CONTACT within the digital world – personal online behaviour that increases the likelihood of, or causes, harm, such as making, sending and receiving explicit images (e.g. consensual and non-consensual sharing of nudes and semi-nudes and/or pornography), sharing other explicit images and online bullying; and
- COMMERCE - risks such as online gambling, inappropriate advertising, phishing and or financial scams.

To meet our aims and address the risks above we will:

- Educate pupils about online safety as part of our curriculum. For example:
  - The safe use of social media, the internet and technology
  - Keeping personal information private
  - How to recognise unacceptable behaviour online
  - How to report any incidents of cyber-bullying, ensuring pupils are encouraged to do so, including where they are a witness rather than a victim
- Train staff, as part of their induction, on safe internet use and online safeguarding issues including cyber-bullying and the risks of online radicalisation. All staff members will receive refresher training at least once each academic year
- Educate parents/carers about online safety, via our website, communications sent directly to them and during parents' evenings. We will also share clear procedures with them so they know how to raise concerns about online safety
- Make sure staff are aware of any restrictions placed on them with regards to the use of their mobile phones and cameras, for example that:
  - Staff are allowed to bring their personal phones to school for their own use, but will limit such use to non-contact time when pupils are not present
  - Staff will not take pictures or recordings of pupils on their personal phones or cameras
- Make all pupils, parents/carers, staff, volunteers and governors aware that they are expected to sign an agreement regarding the acceptable use of the internet in school, use of the school's ICT systems and use of their mobile and smart technology
- Explain the sanctions we will use if a pupil is in breach of our policies on the acceptable use of the internet and mobile phones
- Make sure all staff, pupils and parents/carers are aware that staff have the power to search pupils' phones, as set out in the DfE's guidance on searching, screening and confiscation
- Put in place robust filtering and monitoring systems to limit children's exposure to the 4 key categories of risk (described above) from the school's IT systems
- Carry out an annual review to online safety, supported by an annual risk assessment that considers and reflects the risks faced by our school community.

The Stoke Poges School have online filtering and monitoring systems in place to ensure children are safeguarded from potentially harmful online material.

School will follow the advice as given by the government, to advise and support children with any online learning taking place at home to ensure this is done so safely.

We have a separate **Mobile Phone Policy** which sets out the acceptable use of mobile technologies by pupils whilst onsite. This includes sanctions which will be applied when these boundaries are not adhered to.

Visitors to our school are respectfully requested to turn all mobile devices off.

Staff use of mobile technology whilst on site is set out in the **Staff Code of Conduct**.

All staff receive awareness training in order to understand the risks children are exposed to.

For comprehensive details about our school's policy on online safety, please refer to our online safety policy, which can be found on the website.

### **18. Sending nude or semi-nude images ('sexting')**

Sending nude images or semi-nude images, is one of a number of 'risk-taking' behaviours associated with the use of digital technologies, social media or the internet. It is accepted that children experiment and challenge boundaries and therefore the risks associated with 'online' activity can never be completely eliminated.

Further advice and guidance can be found using the link below:

[Sharing nudes and semi-nudes](#)

Staff, pupils and parents/carers are supported, via training, to understand the creation and sharing of sexual imagery, such as photos or videos, of under 18s is illegal. This includes images of pupils themselves if they are under the age of 18.

Any youth produced sexual imagery disclosures will follow the normal safeguarding practices and protocols for our school. We will also use the guidelines for responding to incidents, as set out in:

[Sharing nudes and semi-nudes: advice for education settings working with children and young people - GOV.UK \(www.gov.uk\)](#) produced by the UK Council for Internet Safety.

If the incident meets the threshold it may be necessary to refer to the police in a timely manner.

#### **Your responsibilities when responding to an incident**

If you are made aware of an incident involving the consensual or non-consensual sharing of nude or semi-nude images/videos, you must report it to the DSL immediately.

You must **NOT**:

- view, copy, print, share, store or save the imagery yourself, or ask a pupil to share or download it (if you have already viewed the imagery by accident, you must report this to the DSL)
- delete the imagery or ask the pupil to delete it
- ask the pupil(s) who are involved in the incident to disclose information regarding the imagery (this is the DSL's responsibility)
- share information about the incident with other members of staff, the pupil(s) it involves or their, or other, parents and/or carers
- say or do anything to blame or shame any young people involved

You should explain that you need to report the incident and reassure the pupil(s) that they will receive support and help from the DSL.

### **19. Peer on Peer Abuse**

The Stoke Poges School believes that all children have a right to attend school and learn in a safe environment free from harm by both adults and other pupils. We recognise that some safeguarding concerns can occur via peer on peer abuse.

All staff operate a zero-tolerance policy to peer on peer abuse and will not pass off incidents as 'banter' or 'just growing up'.

All staff recognise that peer on peer issues may include, but may not be limited to:

- Bullying (including cyber bullying)
- Racial abuse
- Physical abuse, such as hitting, hair-pulling, shaking, biting or other forms of physical harm
- Sexual violence and sexual harassment
- Causing someone to engage in sexual activity without consent, such as forcing someone to strip, touch themselves sexually, or to engage in sexual activity with a third party
- Abuse related to sexual orientation or identity
- Sending nude or semi-nude images (consensual & non-consensual)
- Upskirting and initiation/hazing type violence and rituals
- Emotional abuse
- Abuse within intimate partner relationships

All staff should be able to reassure victims that they are being taken seriously and that they will be supported and kept safe.

The following will be considered when dealing with incidents:

- Whether there is a large difference in power between the victim and perpetrator i.e. size, age, ability, perceived social status or vulnerabilities, including SEND, CP/CIN or CLA
- Whether the perpetrator has previously tried to harm or intimidate pupils
- Any concerns about the intentions of the alleged perpetrator

In order to minimise the risk of peer on peer abuse taking place, school must:

- Deliver RE/RSE/PSHE to include teaching pupils about how to keep safe and understanding what acceptable behaviour looks like
- Ensure that pupils know that all members of staff will listen to them if they have concerns and will act upon them
- Have systems in place for any pupil to be able to voice concerns
- Develop robust risk assessments if appropriate
- Refer to any other relevant policies when dealing with incidents, such as the **Behaviour Policy** and/or the **Anti-Bullying Policy**
- Challenge any form of derogatory or sexualised language or inappropriate behaviour between peers, including requesting or sending sexual images
- Be vigilant to issues that particularly affect different genders – for example, sexualised or aggressive touching or grabbing towards female pupils, and initiation or hazing type violence with respect to boys
- Ensure staff are trained to understand:
  - How to recognise the indicators and signs of peer on peer abuse, and know how to identify it and respond to reports
  - That even if there are no reports of peer on peer abuse in school, it does not mean it is not happening – staff should maintain an attitude of 'it could happen here'
  - That if they have concerns about a child's welfare, they should act on them immediately rather than wait to be told, and that victims may not always make a direct report
  - That certain children may face additional barriers to telling someone because of their vulnerability, disability, gender, ethnicity and/or sexual orientation
  - That a pupil harming a peer could be a sign that the child is being abused themselves, and that this would fall under the scope of this policy
  - The important role they have to play in preventing peer on peer abuse and responding where they believe a child may be at risk from it
  - That they should speak to the DSL if they have any concerns

We recognise that 'Upskirting' involves taking a photograph under an individual's clothing without their knowledge. We understand that it causes the victim distress and humiliation and that any gender can be a



victim. Staff recognise that 'Upskirting' is a criminal offence and must promptly report any such incidents to the Headteacher, DSL or most senior member of staff.

#### Procedures for dealing with allegations of peer on peer abuse

If a pupil makes an allegation of abuse against another pupil:

- You must record the allegation and tell the DSL, but do not investigate it
- The DSL will contact the local authority children's social care team and follow its advice, as well as the police if the allegation involves a potential criminal offence
- The DSL will put a risk assessment and support plan into place for all children involved (including the victim(s), the child(ren) against whom the allegation has been made and any others affected) with a named person they can talk to if needed
- The DSL will contact the children and adolescent mental health services (CAMHS), if appropriate

Reference will be made to the following government guidance and part 5 of the **Keeping Children Safe in Education, Sept 2021** to ensure that all staff have an understanding of the serious nature of sexual violence and sexual harassment between children in schools. [Sexual violence and sexual harassment between children in schools and colleges \(publishing.service.gov.uk\)](https://www.publishing.service.gov.uk/government/uploads/system/uploads/attachment_data/file/97222/sexual-violence-and-sexual-harassment-between-children-in-schools-and-colleges.pdf)

### **20. Sexual Violence & Sexual Harassment**

Sexual violence and sexual harassment can occur between two children of **any age and sex**. It can occur through a group of children sexually assaulting or sexually harassing a single child or group of children. This can occur online, face to face (both physically and verbally) and can take place inside or outside of school. As set out in Part five of the KCSIE 2021, all staff maintain an attitude of '**it could happen here**' and it is never acceptable.

All staff have a responsibility to address inappropriate behaviour in a timely manner, however seemingly insignificant it may appear.

All victims will be reassured that they are being taken seriously and that they will be supported and kept safe. No child will ever be made to feel ashamed for making a report or that they are creating a problem for our school.

### **21. Cultural Issues**

As a school we are aware of the cultural diversity of the community around us and work sensitively to address the unique culture of our pupils and their families as they relate to safeguarding and child protection. This includes children at risk of harm from abuse arising from culture, ethnicity, faith and belief on the part of their parent, carer or wider community.

Staff must report concerns about abuse linked to culture, faith and beliefs in the same way as other child protection concerns.

### **22. So-Called 'Honour' Based Abuse**

Staff at our school understand there is a legal duty to report known cases of Female Genital Mutilation (FGM) and So Called 'Honour' Based Abuse to the police and they will do this with the support of the DSL. [Mandatory reporting of female genital mutilation: procedural information - GOV.UK](https://www.gov.uk/government/uploads/system/uploads/attachment_data/file/61222/mandatory-reporting-of-female-genital-mutilation-procedural-information.pdf)

Our school is aware of the need to respond to concerns relating to forced marriage and understand that it is illegal, a form of child abuse and a breach of children's rights. We recognise some pupils, due to capacity or additional learning needs, may not be able to give an informed consent and this will be dealt with under our child protection processes. The Stoke Poges School staff can contact the Forced Marriage Unit if they need advice or information. Contact 020 7008 0151 [fm@fco.gov.uk](mailto:fm@fco.gov.uk)

We are aware of the signs of FGM [Female genital mutilation \(FGM\) | NSPCC](https://www.nspcc.org.uk/keeping-children-safe/sexual-abuse-and-exploitation/female-genital-mutilation/)  
We recognise both male and female pupils may be subject to honour-based abuse.

We promote awareness through training and access to resources, ensuring that the signs and indicators are known and recognised by staff.

Any suspicions or concerns for forced marriage are reported to the DSL who will refer to First Response or the police if emergency action is required.

### **23. Contextual Safeguarding**

Contextual Safeguarding is an approach to understanding, and responding to, children's experiences of significant harm beyond their families. It recognises that the different relationships that children form in their neighbourhoods, schools and online can feature violence and abuse. Parents and carers may have little influence over these contexts, and children's experiences of extra-familial abuse can undermine parent/carer-children relationships.

At The Stoke Poges School, all staff recognise that pupils may encounter safeguarding incidents that happen outside of school and can occur between children outside of this environment. We will respond to such concerns, reporting to the appropriate agencies in order to support and protect the pupil.

All staff and especially the DSLs, will consider the context of incidents that occur outside of school to establish if situations outside of their families may be putting the pupil's welfare and safety at risk of abuse or exploitation, including (but not limited to) sexual exploitation, criminal exploitation and serious youth violence.

Children who may be alleged perpetrators will also be supported to understand the impact of contextual issues on their safety and welfare.

In such cases the individual needs and vulnerabilities of each child will be considered.

Further guidance can be found at: <https://contextualsafeguarding.org.uk/>

### **24. Serious Violence**

All staff are aware of signs and indicators which may signal that children are at risk from, or are involved with, serious violent crime. These may include increased absence from school, a change in friendships or relationships with older individuals or groups, a significant decline in performance, signs of self-harm or significant change in well-being or signs of assault or unexplained injuries. Staff are aware that unexplained gifts or new possessions could also indicate that children have been approached by, or are involved with, individuals associated with criminal networks or gangs.

At The Stoke Poges School, we are aware of the range risk factors which increase the likelihood of involvement in serious violence such as being male, having been frequently absent or permanently excluded from school, having experienced child maltreatment and having been involved in offending such as theft or robbery. School will take appropriate measures to manage any situations arising. [Preventing youth violence and gang involvement - Practical advice for schools and colleges \(publishing.service.gov.uk\)](https://publishing.service.gov.uk/government/uploads/system/uploads/attachment_data/file/444444/preventing-youth-violence-and-gang-involvement-practical-advice-for-schools-and-colleges.pdf)

### **25. Domestic Abuse**

All staff recognise that children who experience domestic abuse, including intimate partner abuse, can suffer long lasting emotional and psychological effects. Staff must report any concerns using the school's safeguarding procedures.

The Stoke Poges School recognise that some groups of children are potentially at greater risk of harm.

### **26. Children who need a social worker (Child Protection and Child In Need Plans)**

Staff recognise that children may have a social worker due to safeguarding or welfare needs and this can cause them to have barriers with attendance, behaviour, learning and mental health.

The Stoke Poges School will share information with a social worker for any child whom they are supporting to ensure decisions are made in the best interests of the child.

Informed decisions will be made by staff with regards to safeguarding for those children who are being supported by a social worker.

### **27. Mental Health**

At The Stoke Poges School, we are aware that mental health problems can be an indicator that a child has suffered or may be at risk of suffering abuse, neglect, or exploitation.

Staff recognise that traumatic adverse childhood experiences can have lasting impact throughout a child's life and this can impact on mental health, behaviour and education.

Staff will report any mental health concern that is linked to a safeguarding concern to the DSL.

Where there are concerns for a child's mental health The Stoke Poges School will seek advice from a trained professional, who would be able to make a diagnosis of a mental health problem.

[Mental health and behaviour in schools \(publishing.service.gov.uk\)](https://publishing.service.gov.uk)

### **28. Looked-after and previously looked-after children**

We will ensure that staff have the skills, knowledge and understanding to keep looked-after children and previously looked-after children safe. In particular, we will ensure that:

- Appropriate staff have relevant information about children's looked after status, contact arrangements with birth parents or those with parental responsibility, and care arrangements
- The DSL has details of children's social workers and relevant virtual school heads.

We have appointed a designated teacher, Mrs Stanhope, who is responsible for promoting the educational achievement of looked-after children and previously looked-after children inline with statutory guidance.

Further details can be found in the appropriate policy.

### **29. Use of Photography**

We will often use photographs and film to capture achievements, monitor a child's development and help promote successes within our school. Guidelines for the use of photography in The Stoke Poges School is set out in our **Use of Photography Policy**.

### **29. Policy Review**

The Governing Board of our school is responsible for ensuring the annual review of this policy.

<b>Headteacher</b>		<b>Date</b>	
<b>Chair of Governing Board</b>		<b>Date</b>	

## Appendix 1: types of abuse

Everyone who works with children has a duty to safeguard and promote their welfare. They should be aware of the signs and indicators of abuse and know what to do and to whom to speak if they become concerned about a child or if a child discloses to them.

The following is intended as a reference for school staff and parents/carers if they become concerned that a child is suffering or likely to suffer significant harm.

The Children Act 1989 defines abuse as when a child is suffering or is likely to suffer 'significant harm'. Harm means ill treatment or the impairment of health or development. Four categories of abuse are identified:

### Categories of Abuse

Child abuse is a form of maltreatment. Somebody may abuse or neglect a child by inflicting harm, or by failing to act to prevent harm. Children people may be abused in a family or in an institutional or community setting by those known to them or, more rarely, by others. Abuse can take place wholly online, or technology may be used to facilitate offline abuse. Children may be abused by an adult or adults, or another child or children.

#### Physical Abuse

A form of abuse which may involve; hitting, shaking, throwing, poisoning, burning or scalding, drowning, suffocating, or otherwise causing physical harm to a child. Physical harm may also be caused when a parent or carer fabricates the symptoms of, or deliberately induces, illness in a child.

#### Emotional Abuse

The persistent emotional maltreatment of a child such as to cause severe and persistent adverse effects on the child's emotional development. It may involve conveying to a child that they are worthless or unloved, inadequate, or valued only insofar as they meet the needs of another person. It may include not giving the child opportunities to express their views, deliberately silencing them or 'making fun' of what they say or how they communicate. It may feature age or developmentally inappropriate expectations being imposed on children. These may include interactions that are beyond a child's developmental capability, as well as overprotection and limitation of exploration and learning, or preventing the child participating in normal social interaction. It may involve seeing or hearing the ill-treatment of another. It may involve serious bullying (including cyber bullying), causing children frequently to feel frightened or in danger, or the exploitation or corruption of children. Some level of emotional abuse is involved in all types of maltreatment of a child, though it may occur alone.

#### Sexual Abuse

Involves forcing or enticing a child to take part in sexual activities, not necessarily involving a high level of violence, whether or not the child is aware of what is happening. The activities may involve physical contact, including assault by penetration (for example, rape or oral sex) or non-penetrative acts such as masturbation, kissing, rubbing and touching outside of clothing. They may also include non-contact activities, such as involving children in looking at, or in the production of, sexual images, watching sexual activities, encouraging children to behave in sexually inappropriate ways, or grooming a child in preparation for abuse. Sexual abuse can take place online and technology can be used to facilitate offline abuse. Sexual abuse is not solely perpetrated by adult males. Women can also commit acts of sexual abuse, as can other children.

#### Neglect

The persistent failure to meet a child's basic physical and/or psychological needs, likely to result in the serious impairment of the child's health or development. Neglect may occur during pregnancy as a result of maternal substance abuse. Once a child is born, neglect may involve a parent or carer failing to: provide adequate food, clothing and shelter (including exclusion from home or abandonment) protect a child from physical and emotional harm or danger ensure adequate supervision (including the use of inadequate caregivers) ensure access to appropriate medical care or treatment. It may also include neglect of, or unresponsiveness to, a child's basic emotional needs.

## **Exploitation**

Exploitation is a form of child abuse and may take a number of forms:

### **Child Sexual Exploitation (CSE) and child Criminal Exploitation (CCE)**

Both CSE and CCE are forms of abuse that occur where an individual or group takes advantage of an imbalance in power to coerce, manipulate or deceive a child into taking part in sexual or criminal activity, in exchange for something the victim needs or wants, and/or for the financial advantage or increased status of the perpetrator or facilitator and/or through violence or the threat of violence. CSE and CCE can affect children, both male and female and can include children who have been moved (commonly referred to as trafficking) for the purpose of exploitation.

Taken from – “Keeping Children Safe in Education 2021”.

[Home Office – Serious Violence Strategy, April 2018 \(publishing.service.gov.uk\)](https://www.publishing.service.gov.uk/government/uploads/system/uploads/attachment_data/file/672222/serious_violence_strategy.pdf)

### **County Lines**

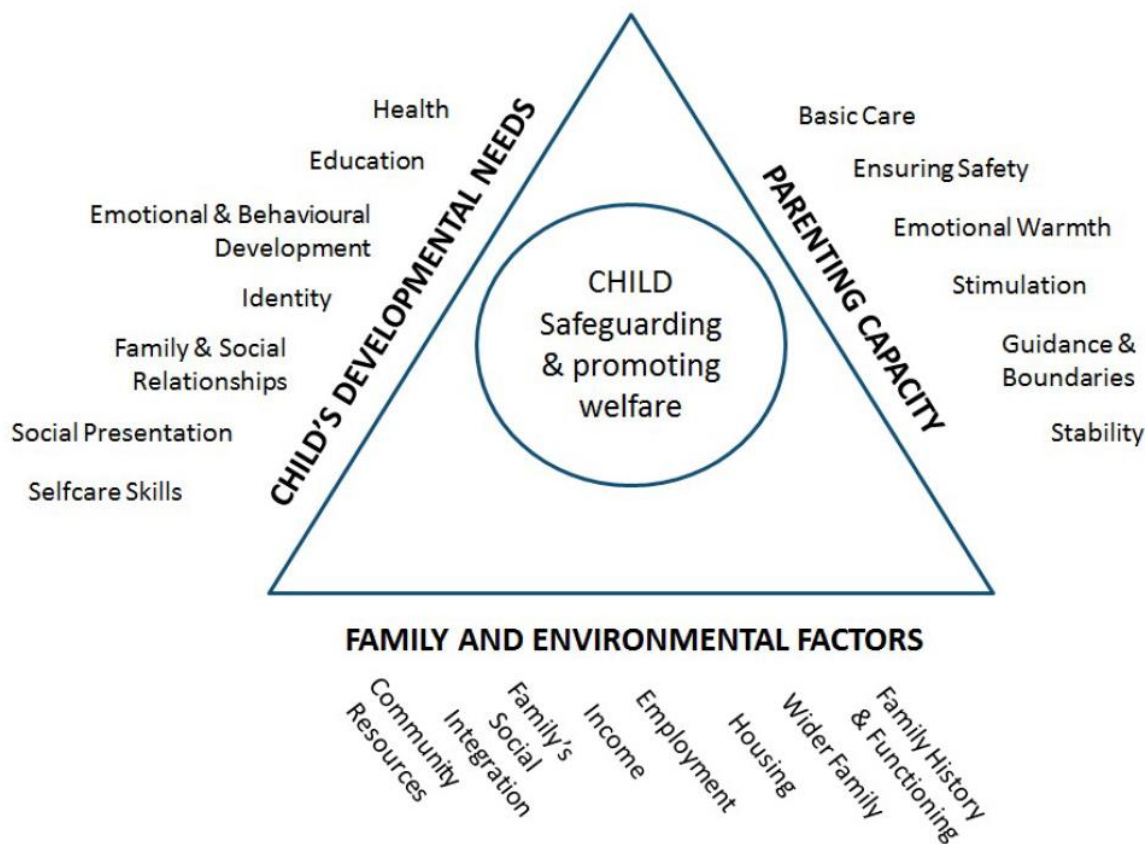
County lines is a term used to describe gangs and organised criminal networks involved in exporting illegal drugs using dedicated mobile phone lines or other form of “deal line”. This activity can happen locally as well as across the UK - no specified distance of travel is required. Children and vulnerable adults are exploited to move, store and sell drugs and money. Offenders will often use coercion, intimidation, violence (including sexual violence) and weapons to ensure compliance of victims. Taken from “Keeping Children Safe in Education 2021”

### **Extremism**

Extremism is the vocal or active opposition to our fundamental values, including democracy, the rule of law, individual liberty and the mutual respect and tolerance of different faiths and beliefs. This also includes calling for the death of members of the armed forces. Radicalisation refers to the process by which a person comes to support terrorism and extremist ideologies associated with terrorist groups.

## Appendix 2 - Assessment Framework

(from Working Together to Safeguard Children, July 2018)



Every assessment should draw together relevant information gathered from the child and their family and from relevant practitioners including teachers and school staff, early years workers, health practitioners, the police and adult social care.

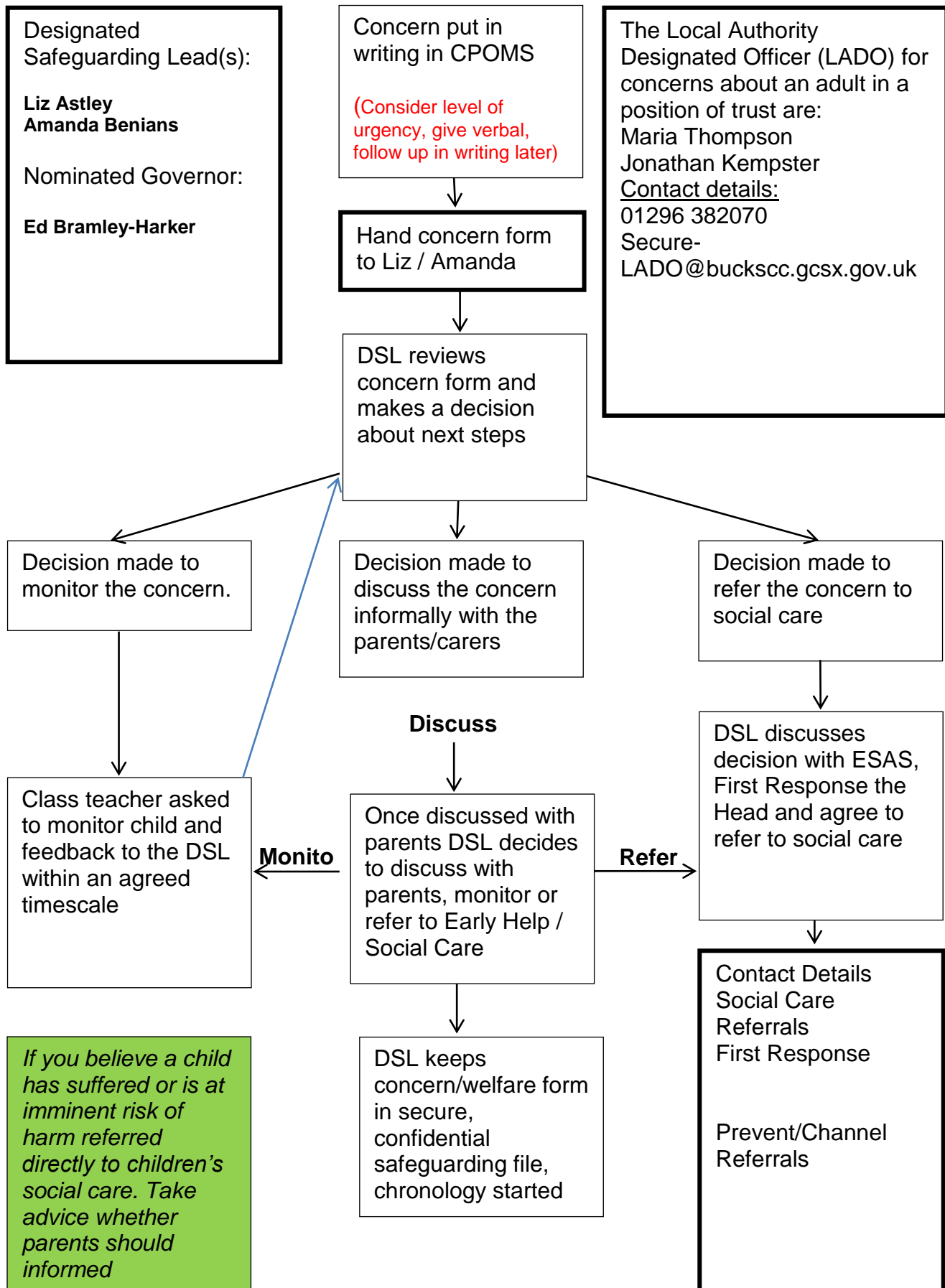
Every assessment of a child should reflect the unique characteristics of the child within their family and community context.

Each child whose referral has been accepted by children's social care should have their individual needs assessed, including an analysis of the parental capacity to meet those needs, whether they arise from issues within the family or the wider community.

Frequently, more than one child from the same family is referred and siblings within the family should always be considered.

## Appendix 3

### FLOW CHART FOR RAISING SAFEGUARDING CONCERNS ABOUT A CHILD



## Appendix 4

### Safer recruitment and DBS checks – policy and procedures

To make sure we recruit suitable people, we will ensure those involved in the recruitment and employment of staff to work with children have received appropriate safer recruitment training.

We have put the following steps in place during our recruitment and selection process to ensure we are committed to safeguarding and promoting the welfare of children.

#### Advertising

When advertising roles, we will make clear:

- Our school's commitment to safeguarding and promoting the welfare of children
- That safeguarding checks will be undertaken
- The safeguarding requirements and responsibilities of the role, such as the extent to which the role will involve contact with children
- Whether or not the role is exempt from the Rehabilitation of Offenders Act 1974 and the amendments to the Exceptions Order 1975, 2013 and 2020. If the role is exempt, certain spent convictions and cautions are 'protected', so they do not need to be disclosed, and if they are disclosed, we cannot take them into account

#### Application form

Our application forms will:

- Include a statement saying that it is an offence to apply for the role if an applicant is barred from engaging in regulated activity relevant to children (where the role involves this type of regulated activity)
- Include a copy of, or link to, our child protection and safeguarding policy

#### Shortlisting

Our shortlisting process will involve at least 2 people and will:

- Consider any inconsistencies and look for gaps in employment and reasons given for them
- Explore all potential concerns

Once we have shortlisted candidates, we will ask shortlisted candidates to:

- Complete a self-declaration of their criminal record or any information that would make them unsuitable to work with children, so that they have the opportunity to share relevant information and discuss it at interview stage. The information we will ask for includes:
  - If they have a criminal history
  - Whether they are included on the barred list
  - Whether they are prohibited from teaching
  - Information about any criminal offences committed in any country in line with law as applicable in England and Wales
  - Any relevant overseas information
- Sign a declaration confirming the information they have provided is true

#### Seeking references and checking employment history

We will obtain references before interview. Any concerns raised will be explored further with referees and taken up with the candidate at interview.

When seeking references, we will:

- Not accept open references
- Liaise directly with referees and verify any information contained within references with the referees
- Ensure any references are from the candidate's current employer and completed by a senior person. Where the referee is school based, we will ask for the reference to be confirmed by the headteacher as accurate in respect to disciplinary investigations
- Obtain verification of the candidate's most recent relevant period of employment if they are not currently employed



- Secure a reference from the relevant employer from the last time the candidate worked with children if they are not currently working with children
- Compare the information on the application form with that in the reference and take up any inconsistencies with the candidate
- Resolve any concerns before any appointment is confirmed

### **Interview and selection**

When interviewing candidates, we will:

- Probe any gaps in employment, or where the candidate has changed employment or location frequently, and ask candidates to explain this
- Explore any potential areas of concern to determine the candidate's suitability to work with children
- Record all information considered and decision made

### **Pre-appointment vetting checks**

We will record all information on the checks carried out in the school's single central record (SCR). Copies of these checks, where appropriate, will be held in individuals' personnel files. We follow requirements and best practice in retaining copies of these checks, as set out below.

### **New staff**

All offers of appointment will be conditional until satisfactory completion of the necessary pre-employment checks. When appointing new staff, we will:

- Verify their identity
- Obtain (via the applicant) an enhanced DBS certificate, including barred list information for those who will be engaging in regulated activity (see definition below). We will obtain the certificate before, or as soon as practicable after, appointment, including when using the DBS update service. We will not keep a copy of the certificate for longer than 6 months, but when the copy is destroyed we may still keep a record of the fact that vetting took place, the result of the check and recruitment decision taken
- Obtain a separate barred list check if they will start work in regulated activity before the DBS certificate is available
- Verify their mental and physical fitness to carry out their work responsibilities
- Verify their right to work in the UK. We will keep a copy of this verification for the duration of the member of staff's employment and for 2 years afterwards
- Verify their professional qualifications, as appropriate
- Ensure they are not subject to a prohibition order if they are employed to be a teacher
- Carry out further additional checks, as appropriate, on candidates who have lived or worked outside of the UK. Where available, these will include:
  - For all staff, including teaching positions: criminal records checks for overseas applicants
  - For teaching positions: obtaining a letter of professional standing from the professional regulating authority in the country where the applicant has worked

We will ensure that appropriate checks are carried out to ensure that individuals are not disqualified under the 2018 Childcare Disqualification Regulations and Childcare Act 2006. Where we take a decision that an individual falls outside of the scope of these regulations and we do not carry out such checks, we will retain a record of our assessment on the individual's personnel file. This will include our evaluation of any risks and control measures put in place, and any advice sought.

**Regulated activity** means a person who will be:

- Responsible, on a regular basis in school or college, for teaching, training, instructing, caring for or supervising children; or
- Carrying out paid, or unsupervised unpaid, work regularly in a school or college, where that work provides an opportunity for contact with children; or
- Engaging in intimate or personal care or overnight activity, even if this happens only once and regardless of whether they are supervised or not

## **Existing staff**

In certain circumstances we will carry out all the relevant checks on existing staff as if the individual was a new member of staff. These circumstances are when:

- There are concerns about an existing member of staff's suitability to work with children; or
- An individual moves from a post that is not regulated activity to one that is; or
- There has been a break in service of 12 weeks or more

We will refer to the DBS anyone who has harmed, or poses a risk of harm, to a child or vulnerable adult where:

- We believe the individual has engaged in relevant conduct; or
- We believe the individual has received a caution or conviction for a relevant (automatic barring with or without the right to make representations) offence, under the Safeguarding Vulnerable Groups Act 2006 (Prescribed Criteria and Miscellaneous Provisions) Regulation 2009; or
- We believe the 'harm test' is satisfied in respect of the individual (i.e. they may harm a child or vulnerable adult or put them at risk of harm); and
- The individual has been removed from working in regulated activity (paid or unpaid) or would have been removed if they had not left

## **Agency and third-party staff**

We will obtain written notification from any agency or third-party organisation that it has carried out the necessary safer recruitment checks that we would otherwise perform. We will also check that the person presenting themselves for work is the same person on whom the checks have been made.

## **Contractors**

We will ensure that any contractor, or any employee of the contractor, who is to work at the school has had the appropriate levels of DBS check (this includes contractors who are provided through a PFI or similar contract). This will be:

- An enhanced DBS check with barred list information for contractors engaging in regulated activity
- An enhanced DBS check, not including barred list information, for all other contractors who are not regulated activity but whose work provides them with an opportunity for regular contact with children

We will obtain the DBS check for self-employed contractors.

We will not keep copies of such checks for longer than 6 months.

Contractors who have not had any checks will not be allowed to work unsupervised or engage in regulated activity under any circumstances.

We will check the identify of all contractors and their staff on arrival at the school.

For self-employed contractors such as music teachers or sports coaches, we will ensure that appropriate checks are carried out to ensure that individuals are not disqualified under the 2018 Childcare Disqualification Regulations and Childcare Act 2006. Where we decide that an individual falls outside of the scope of these regulations and we do not carry out such checks, we will retain a record of any assessment. This will include our evaluation of any risks and control measures put in place, and any advice sought.

## **Trainee/student teachers**

Where applicants for initial teacher training are salaried by us, we will ensure that all necessary checks are carried out.

Where trainee teachers are fee-funded, we will obtain written confirmation from the training provider that necessary checks have been carried out and that the trainee has been judged by the provider to be suitable to work with children.

In both cases, this includes checks to ensure that individuals are not disqualified under the 2018 Childcare Disqualification Regulations and Childcare Act 2006.

## **Volunteers**

We will:

- Never leave an unchecked volunteer unsupervised or allow them to work in regulated activity
- Obtain an enhanced DBS check with barred list information for all volunteers who are new to working in regulated activity
- Carry out a risk assessment when deciding whether to seek an enhanced DBS check without barred list information for any volunteers not engaging in regulated activity. We will retain a record of this risk assessment
- Ensure that appropriate checks are carried out to ensure that individuals are not disqualified under the 2018 Childcare Disqualification Regulations and Childcare Act 2006. Where we decide that an individual falls outside of the scope of these regulations and we do not carry out such checks, we will retain a record of our assessment. This will include our evaluation of any risks and control measures put in place, and any advice sought

## **Governors**

All governors will have an enhanced DBS check without barred list information.

They will have an enhanced DBS check with barred list information if working in regulated activity.

All governors will also have a section 128 check (as a section 128 direction disqualifies an individual from being a maintained school governor).

## **Staff working in alternative provision settings**

Where we place a pupil with an alternative provision provider, we obtain written confirmation from the provider that they have carried out the appropriate safeguarding checks on individuals working there that we would otherwise perform.

## Appendix 5

### Allegations of abuse made against staff

#### Section 1: allegations that may meet the harms threshold

This section of this policy applies to all cases in which it is alleged that a current member of staff, including a supply teacher or volunteer, has:

- Behaved in a way that has harmed a child, or may have harmed a child, and/or
- Possibly committed a criminal offence against or related to a child, and/or
- Behaved towards a child or children in a way that indicates he or she may pose a risk of harm to children, and/or
- Behaved or may have behaved in a way that indicates they may not be suitable to work with children – this includes behaviour taking place both inside and outside of school

We will deal with any allegation of abuse quickly, in a fair and consistent way that provides effective child protection while also supporting the individual who is the subject of the allegation.

A 'case manager' will lead any investigation. This will be the headteacher, or chair of governors where the headteacher is the subject of the allegation. The case manager will be identified at the earliest opportunity.

Our procedures for dealing with allegations will be applied with common sense and judgement.

#### **Suspension of the accused until the case is resolved**

Suspension will not be the default position, and will only be considered in cases where there is reason to suspect that a child or other children is/are at risk of harm, or the case is so serious that it might be grounds for dismissal. In such cases, we will only suspend an individual if we have considered all other options available and there is no reasonable alternative.

Based on an assessment of risk, we will consider alternatives such as:

- Redeployment within the school so that the individual does not have direct contact with the child or children concerned
- Providing an assistant to be present when the individual has contact with children
- Redeploying the individual to alternative work in the school so that they do not have unsupervised access to children
- Moving the child or children to classes where they will not come into contact with the individual, making it clear that this is not a punishment and parents have been consulted
- Temporarily redeploying the individual to another role in a different location, for example to an alternative school or other work for the local authority.

If in doubt, the case manager will seek views from the school's personnel adviser and the designated officer at the local authority, as well as the police and children's social care where they have been involved.

#### **Definitions for outcomes of allegation investigations**

- **Substantiated:** there is sufficient evidence to prove the allegation
- **Malicious:** there is sufficient evidence to disprove the allegation and there has been a deliberate act to deceive
- **False:** there is sufficient evidence to disprove the allegation
- **Unsubstantiated:** there is insufficient evidence to either prove or disprove the allegation (this does not imply guilt or innocence)
- **Unfounded:** to reflect cases where there is no evidence or proper basis which supports the allegation being made

#### **Procedure for dealing with allegations**

In the event of an allegation that meets the criteria above, the case manager will take the following steps:

- Conduct basic enquiries in line with local procedures to establish the facts to help determine whether there is any foundation to the allegation before carrying on with the steps below

- Discuss the allegation with the designated officer at the local authority. This is to consider the nature, content and context of the allegation and agree a course of action, including whether further enquiries are necessary to enable a decision on how to proceed, and whether it is necessary to involve the police and/or children's social care services. (The case manager may, on occasion, consider it necessary to involve the police *before* consulting the designated officer – for example, if the accused individual is deemed to be an immediate risk to children or there is evidence of a possible criminal offence. In such cases, the case manager will notify the designated officer as soon as practicably possible after contacting the police)
- Inform the accused individual of the concerns or allegations and likely course of action as soon as possible after speaking to the designated officer (and the police or children's social care services, where necessary). Where the police and/or children's social care services are involved, the case manager will only share such information with the individual as has been agreed with those agencies
- Where appropriate (in the circumstances described above), carefully consider whether suspension of the individual from contact with children at the school is justified or whether alternative arrangements such as those outlined above can be put in place. Advice will be sought from the designated officer, police and/or children's social care services, as appropriate
- **If immediate suspension is considered necessary**, agree and record the rationale for this with the designated officer. The record will include information about the alternatives to suspension that have been considered, and why they were rejected. Written confirmation of the suspension will be provided to the individual facing the allegation or concern within 1 working day, and the individual will be given a named contact at the school and their contact details
- **If it is decided that no further action is to be taken** in regard to the subject of the allegation or concern, record this decision and the justification for it and agree with the designated officer what information should be put in writing to the individual and by whom, as well as what action should follow both in respect of the individual and those who made the initial allegation
- **If it is decided that further action is needed**, take steps as agreed with the designated officer to initiate the appropriate action in school and/or liaise with the police and/or children's social care services as appropriate
- Provide effective support for the individual facing the allegation or concern, including appointing a named representative to keep them informed of the progress of the case and considering what other support is appropriate.
- Inform the parents or carers of the child/children involved about the allegation as soon as possible if they do not already know (following agreement with children's social care services and/or the police, if applicable). The case manager will also inform the parents or carers of the requirement to maintain confidentiality about any allegations made against teachers (where this applies) while investigations are ongoing. Any parent or carer who wishes to have the confidentiality restrictions removed in respect of a teacher will be advised to seek legal advice
- Keep the parents or carers of the child/children involved informed of the progress of the case (only in relation to their child – no information will be shared regarding the staff member)
- Make a referral to the DBS where it is thought that the individual facing the allegation or concern has engaged in conduct that harmed or is likely to harm a child, or if the individual otherwise poses a risk of harm to a child

If the school is made aware that the secretary of state has made an interim prohibition order in respect of an individual, we will immediately suspend that individual from teaching, pending the findings of the investigation by the Teaching Regulation Agency.

Where the police are involved, wherever possible the Governing Board will ask the police at the start of the investigation to obtain consent from the individuals involved to share their statements and evidence for use in the school's disciplinary process, should this be required at a later point.

#### **Additional considerations for supply staff**

If there are concerns or an allegation is made against someone not directly employed by the school, such as supply staff provided by an agency, we will take the actions below in addition to our standard procedures.

- We will not decide to stop using a supply teacher due to safeguarding concerns without finding out the facts and liaising with our local authority designated officer to determine a suitable outcome

- The governing board will discuss with the agency whether it is appropriate to suspend the supply teacher, or redeploy them to another part of the school, while the school carries out the investigation
- We will involve the agency fully, but the school will take the lead in collecting the necessary information and providing it to the local authority designated officer as required
- We will address issues such as information sharing, to ensure any previous concerns or allegations known to the agency are taken into account (we will do this, for example, as part of the allegations management meeting or by liaising directly with the agency where necessary)

When using an agency, we will inform them of our process for managing allegations, and keep them updated about our policies as necessary, and will invite the agency's HR manager or equivalent to meetings as appropriate.

### **Timescales**

We will deal with all allegations as quickly and effectively as possible and will endeavour to comply with the following timescales, where reasonably practicable:

- Any cases where it is clear immediately that the allegation is unsubstantiated or malicious will be resolved within 1 week
- If the nature of an allegation does not require formal disciplinary action, we will institute appropriate action within 3 working days
- If a disciplinary hearing is required and can be held without further investigation, we will hold this within 15 working days

However, these are objectives only and where they are not met, we will endeavor to take the required action as soon as possible thereafter.

### **Specific actions**

#### **Action following a criminal investigation or prosecution**

The case manager will discuss with the local authority's designated officer whether any further action, including disciplinary action, is appropriate and, if so, how to proceed, taking into account information provided by the police and/or children's social care services.

#### **Conclusion of a case where the allegation is substantiated**

If the allegation is substantiated and the individual is dismissed or the school ceases to use their services, or the individual resigns or otherwise ceases to provide their services, the case manager and the school's personnel adviser will discuss with the designated officer whether to make a referral to the DBS for consideration of whether inclusion on the barred lists is required. If they think that the individual has engaged in conduct that has harmed (or is likely to harm) a child, or if they think the person otherwise poses a risk of harm to a child, they must make a referral to the DBS.

If the individual concerned is a member of teaching staff, the case manager and personnel adviser will discuss with the designated officer whether to refer the matter to the Teaching Regulation Agency to consider prohibiting the individual from teaching.

#### **Individuals returning to work after suspension**

If it is decided on the conclusion of a case that an individual who has been suspended can return to work, the case manager will consider how best to facilitate this.

The case manager will also consider how best to manage the individual's contact with the child or children who made the allegation, if they are still attending the school.

#### **Unsubstantiated, unfounded, false or malicious reports**

If a report is:

- Determined to be unsubstantiated, unfounded, false or malicious, the DSL will consider the appropriate next steps. If they consider that the child and/or person who made the allegation is in need of help, or the allegation may have been a cry for help, a referral to children's social care may be appropriate

- Shown to be deliberately invented, or malicious, the school will consider whether any disciplinary action is appropriate against the individual(s) who made it

### **Unsubstantiated, unfounded, false or malicious allegations**

If an allegation is:

- Determined to be unsubstantiated, unfounded, false or malicious, the LADO and case manager will consider the appropriate next steps. If they consider that the child and/or person who made the allegation is in need of help, or the allegation may have been a cry for help, a referral to children's social care may be appropriate
- Shown to be deliberately invented, or malicious, the school will consider whether any disciplinary action is appropriate against the individual(s) who made it

### **Confidentiality and information sharing**

The school will make every effort to maintain confidentiality and guard against unwanted publicity while an allegation is being investigated or considered.

The case manager will take advice from the local authority's designated officer, police and children's social care services, as appropriate, to agree:

- Who needs to know about the allegation and what information can be shared
- How to manage speculation, leaks and gossip, including how to make parents or carers of a child/children involved aware of their obligations with respect to confidentiality
- What, if any, information can be reasonably given to the wider community to reduce speculation
- How to manage press interest if, and when, it arises

### **Record-keeping**

The case manager will maintain clear records about any case where the allegation or concern meets the criteria above and store them on the individual's confidential personnel file for the duration of the case.

The records of any allegation that, following an investigation, is found to be malicious or false, will be deleted from the individual's personnel file (unless the individual consents for the records to be retained on the file).

For all other allegations (which are not found to be malicious or false), the following information will be kept on the file of the individual concerned:

- A clear and comprehensive summary of the allegation
- Details of how the allegation was followed up and resolved
- Notes of any action taken, decisions reached and the outcome
- A declaration on whether the information will be referred to in any future reference

In these cases, the school will provide a copy to the individual, in agreement with children's social care or the police as appropriate.

Where records contain information about allegations of sexual abuse, we will preserve these for the Independent Inquiry into Child Sexual Abuse (IICSA), for the term of the inquiry. We will retain all other records at least until the individual has reached normal pension age, or for 10 years from the date of the allegation if that is longer.

### **References**

When providing employer references, we will

- Not refer to any allegation that has been proven to be false, unfounded, unsubstantiated or malicious, or repeated allegations which have all been proven to be false, unfounded, unsubstantiated or malicious
- Include substantiated allegations, provided that the information is factual and does not include opinions

## **Learning lessons**

After any cases where the allegations are *substantiated*, the case manager will review the circumstances of the case with the local authority's designated officer to determine whether there are any improvements that we can make to the school's procedures or practice to help prevent similar events in the future.

This will include consideration of (as applicable):

- Issues arising from the decision to suspend the member of staff
- The duration of the suspension
- Whether or not the suspension was justified
- The use of suspension when the individual is subsequently reinstated. We will consider how future investigations of a similar nature could be carried out without suspending the individual

For all other cases, the case manager will consider the facts and determine whether any improvements can be made.

## **Non-recent allegations**

Abuse can be reported, no matter how long ago it happened.

We will report any non-recent allegations made by a child to the LADO in line with our local authority's procedures for dealing with non-recent allegations.

Where an adult makes an allegation to the school that they were abused as a child, we will advise the individual to report the allegation to the police.

## **Section 2: concerns that do not meet the harm threshold**

This section applies to all concerns (including allegations) about member of staff, including supply teachers, volunteers and contractors, which do not meet the harm threshold set out in section 1 above.

Concerns may arise through, for example:

- Suspicion
- Complaint
- Disclosure made by a child, parent or other adult within or outside the school
- Pre-employment vetting checks

We recognise the importance of responding to and dealing with any concerns in a timely manner to safeguard the welfare of children.

## **Definition of low-level concerns**

The term 'low-level' concern is any concern – no matter how small – that an adult working in or on behalf of the school may have acted in a way that:

- Is inconsistent with the staff code of conduct, including inappropriate conduct outside of work, **and**
- Does not meet the allegations threshold or is otherwise not considered serious enough to consider a referral to the designated officer at the local authority

Examples of such behaviour could include, but not limited to:

- Being overly friendly with children
- Having favourites
- Taking photographs of children on their mobile phone
- Engaging with a child on a one-to-one basis in a secluded area or behind a closed door
- Using inappropriate sexualized, intimidating or offensive language

## **Sharing low-level concerns**

We recognize the importance of creating a culture of openness, trust and transparency to encourage all staff to share low-level concerns so that they can be addressed appropriately.

We will create this culture by:



- Ensuring staff are clear about what appropriate behaviour is, and are confident in distinguishing expected and appropriate behaviour from concerning, problematic or inappropriate behaviour, in themselves and others
- Empowering staff to share any low-level concerns
- Empowering staff to self-refer
- Addressing unprofessional behaviour and supporting the individual to correct it at an early stage
- Providing a responsive, sensitive and proportionate handling of such concerns when they are raised
- Helping to identify any weakness in the school's safeguarding system
- Modelling the school values

### **Responding to low-level concerns**

If the concern is raised by a third party, the headteacher will collect evidence where necessary by speaking:

- Directly to the person who raised the concerns, unless it has been raised anonymously
- To the individual involved and any witnesses

The headteacher will use the information collected to categorise the type of behaviour and determine any further action, in line with the school's staff code of conduct.

### **Record keeping**

All low-level concerns will be recorded in writing. In addition to details of the concerns raised, records will include the context in which the concern arose, any action taken and the rationale for decisions and action taken.

Records will be:

- Kept confidential, held securely and comply with the DPA 2018 and UK GDPR
- Reviewed so that potential patterns of concerning, problematic or inappropriate behaviour can be identified. Where a pattern of such behaviour is identified, we will decide on a course of action, either through our disciplinary procedures or, where a pattern of behaviour moves from a concern to meeting the harms threshold as described in section 1 of this appendix, we will refer it to the designated officer at the local authority
- Retained at least until the individual leaves employment at the school

Where a low-level concern relates to a supply teacher or contractor, we will notify the individual's employer, so any potential patterns of inappropriate behaviour can be identified.

### **References**

We will not include low-level concerns in references unless:

- The concern (or group of concerns) has met the threshold for referral to the LADO and is found to be substantiated; and/or
- The concern (or group of concerns) relates to issues which would ordinarily be included in a reference, such as misconduct or poor performance

## Appendix 6

### Specific safeguarding issues

#### Children missing from education

A child going missing from education, particularly repeatedly, can be a warning sign of a range of safeguarding issues. This might include abuse or neglect, such as sexual abuse or exploitation or child criminal exploitation, or issues such as mental health problems, substance abuse, radicalisation, FGM or forced marriage.

There are many circumstances where a child may become missing from education, but some children are particularly at risk. These include children who:

- Are at risk of harm or neglect
- Are at risk of forced marriage or FGM
- Come from Gypsy, Roma, or Traveller families
- Come from the families of service personnel
- Go missing or run away from home or care
- Are supervised by the youth justice system
- Cease to attend a school
- Come from new migrant families

We will follow our procedures for unauthorised absence and for dealing with children who go missing from education, particularly on repeat occasions, to help identify the risk of abuse and neglect, including sexual exploitation, and to help prevent the risks of going missing in future. This includes informing the local authority if a child leaves the school without a new school being named, and adhering to requirements with respect to sharing information with the local authority, when applicable, when removing a child's name from the admission register at non-standard transition points.

Staff will be trained in signs to look out for and the individual triggers to be aware of when considering the risks of potential safeguarding concerns which may be related to being missing, such as travelling to conflict zones, FGM and forced marriage.

If a staff member suspects that a child is suffering from harm or neglect, we will follow local child protection procedures, including with respect to making reasonable enquiries. We will make an immediate referral to the local authority children's social care team, and the police, if the child is suffering or likely to suffer from harm, or in immediate danger.

#### Child criminal exploitation

Child criminal exploitation (CCE) is a form of abuse where an individual or group takes advantage of an imbalance of power to coerce, control, manipulate or deceive a child into criminal activity, in exchange for something the victim needs or wants, and/or for the financial or other advantage of the perpetrator or facilitator, and/or through violence or the threat of violence.

The abuse can be perpetrated by males or females, and children or adults. It can be a one-off occurrence or a series of incidents over time, and range from opportunistic to complex organised abuse.

The victim can be exploited even when the activity appears to be consensual. It does not always involve physical contact and can happen online. For example, young people may be forced to work in cannabis factories, coerced into moving drugs or money across the country (county lines), forced to shoplift or pickpocket, or to threaten other young people.

Indicators of CCE can include a child:

- Appearing with unexplained gifts or new possessions
- Associating with other young people involved in exploitation
- Suffering from changes in emotional wellbeing
- Misusing drugs and alcohol
- Going missing for periods of time or regularly coming home late
- Regularly missing school or education

- Not taking part in education

If a member of staff suspects CCE, they will discuss this with the DSL. The DSL will trigger the local safeguarding procedures, including a referral to the local authority's children's social care team and the police, if appropriate.

### **Child sexual exploitation**

Child sexual exploitation (CSE) is a form of abuse where an individual or group takes advantage of an imbalance of power to coerce, manipulate or deceive a child into sexual activity, in exchange for something the victim needs or wants and/or for the financial advantage or increased status of the perpetrator or facilitator. It may, or may not, be accompanied by violence or threats of violence.

The abuse can be perpetrated by males or females, and children or adults. It can be a one-off occurrence or a series of incidents over time, and range from opportunistic to complex organised abuse.

The victim can be exploited even when the activity appears to be consensual. Children or young people who are being sexually exploited may not understand that they are being abused. They often trust their abuser and may be tricked into believing they are in a loving, consensual relationship.

CSE can include both physical contact (penetrative and non-penetrative acts) and non-contact sexual activity. It can also happen online. For example, young people may be persuaded or forced to share sexually explicit images of themselves, have sexual conversations by text, or take part in sexual activities using a webcam. CSE may also occur without the victim's immediate knowledge, for example through others copying videos or images.

In addition to the CCE indicators above, indicators of CSE can include a child:

- Having an older boyfriend or girlfriend
- Suffering from sexually transmitted infections or becoming pregnant

If a member of staff suspects CSE, they will discuss this with the DSL. The DSL will trigger the local safeguarding procedures, including a referral to the local authority's children's social care team and the police, if appropriate.

### **Domestic abuse**

Children can witness and be adversely affected by domestic abuse and/or violence at home where it occurs between family members. In some cases, a child may blame themselves for the abuse or may have had to leave the family home as a result.

Types of domestic abuse include intimate partner violence, abuse by family members, teenage relationship abuse and child/adolescent to parent violence and abuse. Anyone can be a victim of domestic abuse, regardless of gender, age, ethnicity, socioeconomic status, sexuality or background, and domestic abuse can take place inside or outside of the home.

Exposure to domestic abuse and/or violence can have a serious, long-lasting emotional and psychological impact on children.

If police are called to an incident of domestic abuse and any children in the household have experienced the incident, the police will inform the key adult in school (usually the designated safeguarding lead) before the child or children arrive at school the following day. This is the procedure where police forces are part of Operation Encompass.

The DSL will provide support according to the child's needs and update records about their circumstances.

### **Homelessness**

Being homeless or being at risk of becoming homeless presents a real risk to a child's welfare.

The DSL and Deputy will be aware of contact details and referral routes in to the local housing authority so they can raise/progress concerns at the earliest opportunity (where appropriate and in accordance with local procedures).

Where a child has been harmed or is at risk of harm, the DSL will also make a referral to children's social care.

### **So-called 'honour-based' abuse (including FGM and forced marriage)**

So-called 'honour-based' abuse (HBA) encompasses incidents or crimes committed to protect or defend the honour of the family and/or community, including FGM, forced marriage, and practices such as breast ironing.

Abuse committed in this context often involves a wider network of family or community pressure and can include multiple perpetrators.

All forms of HBA are abuse and will be handled and escalated as such. All staff will be alert to the possibility of a child being at risk of HBA or already having suffered it. If staff have a concern, they will speak to the DSL, who will activate local safeguarding procedures.

### **FGM**

The DSL will make sure that staff have access to appropriate training to equip them to be alert to children affected by FGM or at risk of FGM.

This policy sets out the procedures to be followed if a staff member discovers that an act of FGM appears to have been carried out or suspects that a pupil is at risk of FGM.

Indicators that FGM has already occurred include:

- A pupil confiding in a professional that FGM has taken place
- A mother/family member disclosing that FGM has been carried out
- A family/pupil already being known to social services in relation to other safeguarding issues
- A girl:
  - Having difficulty walking, sitting or standing, or looking uncomfortable
  - Finding it hard to sit still for long periods of time (where this was not a problem previously)
  - Spending longer than normal in the bathroom or toilet due to difficulties urinating
  - Having frequent urinary, menstrual or stomach problems
  - Avoiding physical exercise or missing PE
  - Being repeatedly absent from school, or absent for a prolonged period
  - Demonstrating increased emotional and psychological needs – for example, withdrawal or depression, or significant change in behaviour
  - Being reluctant to undergo any medical examinations
  - Asking for help, but not being explicit about the problem
  - Talking about pain or discomfort between her legs

Potential signs that a pupil may be at risk of FGM include:

- The girl's family having a history of practising FGM (this is the biggest risk factor to consider)
- FGM being known to be practised in the girl's community or country of origin
- A parent or family member expressing concern that FGM may be carried out
- A family not engaging with professionals (health, education or other) or already being known to social care in relation to other safeguarding issues
- A girl:
  - Having a mother, older sibling or cousin who has undergone FGM
  - Having limited level of integration within UK society
  - Confiding to a professional that she is to have a "special procedure" or to attend a special occasion to "become a woman"
  - Talking about a long holiday to her country of origin or another country where the practice is prevalent, or parents stating that they or a relative will take the girl out of the country for a prolonged period

- Requesting help from a teacher or another adult because she is aware or suspects that she is at immediate risk of FGM
- Talking about FGM in conversation – for example, a girl may tell other children about it (although it is important to take into account the context of the discussion)
- Being unexpectedly absent from school
- Having sections missing from her 'red book' (child health record) and/or attending a travel clinic or equivalent for vaccinations/anti-malarial medication

The above indicators and risk factors are not intended to be exhaustive.

### **Forced marriage**

Forcing a person into marriage is a crime. A forced marriage is one entered into without the full and free consent of one or both parties and where violence, threats, or any other form of coercion is used to cause a person to enter into a marriage. Threats can be physical or emotional and psychological.

Staff will receive training around forced marriage and the presenting symptoms. We are aware of the 'one chance' rule, i.e. we may only have one chance to speak to the potential victim and only one chance to save them.

If a member of staff suspects that a pupil is being forced into marriage, they will speak to the pupil about their concerns in a secure and private place. They will then report this to the DSL.

The DSL will:

- Speak to the pupil about the concerns in a secure and private place
- Activate the local safeguarding procedures and refer the case to the local authority's designated officer
- Seek advice from the Forced Marriage Unit on 020 7008 0151 or [fm@fco.gov.uk](mailto:fm@fco.gov.uk)
- Refer the pupil to an education welfare officer, pastoral tutor, learning mentor, or school counsellor, as appropriate

### **Preventing radicalisation**

- **Radicalisation** refers to the process by which a person comes to support terrorism and extremist ideologies associated with terrorist groups
- **Extremism** is vocal or active opposition to fundamental British values, such as democracy, the rule of law, individual liberty, and mutual respect and tolerance of different faiths and beliefs. This also includes calling for the death of members of the armed forces
- **Terrorism** is an action that:
  - Endangers or causes serious violence to a person/people;
  - Causes serious damage to property; or
  - Seriously interferes or disrupts an electronic system

The use or threat of terrorism must be designed to influence the government or to intimidate the public and is made for the purpose of advancing a political, religious or ideological cause.

Schools have a duty to prevent children from being drawn into terrorism. The DSL will undertake Prevent awareness training and make sure that staff have access to appropriate training to equip them to identify children at risk.

We will assess the risk of children in our school being drawn into terrorism. This assessment will be based on an understanding of the potential risk in our local area, in collaboration with our local safeguarding partners and local police force.

We will ensure that suitable internet filtering is in place, and equip our pupils to stay safe online at school and at home.

There is no single way of identifying an individual who is likely to be susceptible to an extremist ideology. Radicalisation can occur quickly or over a long period.

Staff will be alert to changes in pupils' behaviour.

The government website [Educate Against Hate](#) and charity [NSPCC](#) say that signs that a pupil is being radicalised can include:

- Refusal to engage with, or becoming abusive to, peers who are different from themselves
- Becoming susceptible to conspiracy theories and feelings of persecution
- Changes in friendship groups and appearance
- Rejecting activities they used to enjoy
- Converting to a new religion
- Isolating themselves from family and friends
- Talking as if from a scripted speech
- An unwillingness or inability to discuss their views
- A sudden disrespectful attitude towards others
- Increased levels of anger
- Increased secretiveness, especially around internet use
- Expressions of sympathy for extremist ideologies and groups, or justification of their actions
- Accessing extremist material online, including on Facebook or Twitter
- Possessing extremist literature
- Being in contact with extremist recruiters and joining, or seeking to join, extremist organisations

Children who are at risk of radicalisation may have low self-esteem, or be victims of bullying or discrimination. It is important to note that these signs can also be part of normal teenage behaviour – staff should have confidence in their instincts and seek advice if something feels wrong.

If staff are concerned about a pupil, they will follow our procedures set out in this policy, including discussing their concerns with the DSL.

Staff should **always** take action if they are worried.

Further information on the school's measures to prevent radicalisation are set out in other school policies and procedures.

### **Peer-on-peer abuse**

Peer-on-peer abuse is when children abuse other children. This type of abuse can take place inside and outside of school and online.

Peer-on-peer abuse is most likely to include, but may not be limited to:

- Bullying (including cyber-bullying, prejudice-based and discriminatory bullying)
- Abuse in intimate personal relationships between peers
- Physical abuse such as hitting, kicking, shaking, biting, hair pulling, or otherwise causing physical harm (this may include an online element which facilitates, threatens and/or encourages physical abuse)
- Sexual violence, such as rape, assault by penetration and sexual assault (this may include an online element which facilitates, threatens and/or encourages sexual violence)
- Sexual harassment, such as sexual comments, remarks, jokes and online sexual harassment, which may be standalone or part of a broader pattern of abuse
- Causing someone to engage in sexual activity without consent, such as forging someone to strip, touch themselves sexually, or to engage in sexual activity with a third party
- Consensual and non-consensual sharing of nudes and semi-nudes images and/or videos (also known as sexing or youth produced sexual imagery)
- Upskirting, which typically involves taking a picture under a person's clothing without their permission, with the intention of viewing their genitals or buttocks to obtain sexual gratification, or cause the victim humiliation, distress or alarm
- Initiation/hazing type of violence and rituals (this could include activities involving harassment, abuse or humiliation used as a way of initiating a person into a group and may also include an online element)

Where children abuse their peers online, this can take the form of, for example, abusive, harassing, and misogynistic messages; the non-consensual sharing of indecent images, especially around chat groups; and the sharing of abusive images and pornography, to those who don't want to receive such content.

If staff have any concerns about peer-on-peer abuse, or a child makes a report to them, they will follow the procedures set out in this policy, as appropriate.

### **Sexual violence and sexual harassment between children in schools**

Sexual violence and sexual harassment can occur:

- Between 2 children of any age or sex
- Through a group of children sexually assaulting or sexually harassing a single child or group of children
- Online and face to face (both physically and verbally)

Sexual violence and sexual harassment exist on a continuum and may overlap.

Children who are victims of sexual violence and sexual harassment will likely find the experience stressful and distressing. This will, in all likelihood, adversely affect their educational attainment and will be exacerbated if the alleged perpetrator(s) attends the same school

If a victim reports an incident, it is essential that staff make sure they are reassured that they are being taken seriously and that they will be supported and kept safe. A victim should never be given the impression that they are creating a problem by reporting sexual violence or sexual harassment. Nor should a victim ever be made to feel ashamed for making a report.

Some groups are potentially more at risk. Evidence shows that girls, children with SEN and/or disabilities, and lesbian, gay, bisexual and transgender (LGBT) children are at greater risk.

Staff should be aware of the importance of:

- Challenging inappropriate behaviours
- Making clear that sexual violence and sexual harassment is not acceptable, will never be tolerated and is not an inevitable part of growing up
- Challenging physical behaviours (potentially criminal in nature), such as grabbing bottoms, breasts and genitalia, pulling down trousers, flicking bras and lifting up skirts. Dismissing or tolerating such behaviours risks normalising them

If staff have any concerns about sexual violence or sexual harassment, or a child makes a report to them, they will follow the procedures set out in this policy, as appropriate.

### **Serious violence**

Indicators which may signal that a child is at risk from, or involved with, serious violent crime may include:

- Increased absence from school
- Change in friendships or relationships with older individuals or groups
- Significant decline in performance
- Signs of self-harm or a significant change in wellbeing
- Signs of assault or unexplained injuries
- Unexplained gifts or new possessions (this could indicate that the child has been approached by, or is involved with, individuals associated with criminal networks or gangs and may be at risk of criminal exploitation)

Risk factors which increase the likelihood of involvement in serious violence include:

- Being male
- Having been frequently absent or permanently excluded from school
- Having been involved in offending, such as theft or robbery

Staff will be aware of these indicators and risk factors. If a member of staff has a concern about a pupil being involved in, or at risk of, serious violence, they will report this to the DSL.

### **Checking the identity and suitability of visitors**

All visitors will be required to verify their identity to the satisfaction of staff and to leave their belongings, including their mobile phone(s), in a safe place during their visit.

If the visitor is unknown to the setting, we will check their credentials and reason for visiting before allowing them to enter the setting. Visitors should be ready to produce identification.

Visitors are expected to sign the visitors' book and wear a visitor's lanyard.

Visitors to the school who are visiting for a professional purpose, such as educational psychologists and school improvement officers, will be asked to show photo ID and:

- Will be asked to show their DBS certificate, which will be checked alongside their photo ID; or
- The organisation sending the professional, such as the LA or educational psychology service, will provide prior written confirmation that an enhanced DBS check with barred list information has been carried out

All other visitors, including visiting speakers, will be accompanied by a member of staff at all times. We will not invite into the school any speaker who is known to disseminate extremist views, and will carry out appropriate checks to ensure that any individual or organisation using school facilities is not seeking to disseminate extremist views or radicalise pupils or staff.

### **Non-collection of children**

If a child is not collected at the end of the day, we will:

- Bring the child to the reception and phone the first contact held on the system. A member of staff will stay with them until they are collected
- The member of staff will speak to the adult collecting the child to ascertain the reason for the late collection
- All late collections will be recorded to see if a pattern is emerging
- A member of the SLT will be informed if a child is picked up late and/or if an adult cannot be contacted

### **Missing pupils**

Staff should follow the policy for missing children.