

Common Exception Words



Common Exception Words

All of this week's spellings are common exception words, which means they don't follow the spelling patterns and rules we are learning.

Let's learn the rules that are different for these spellings...

The Sound /ay/ Spelt 'ea'

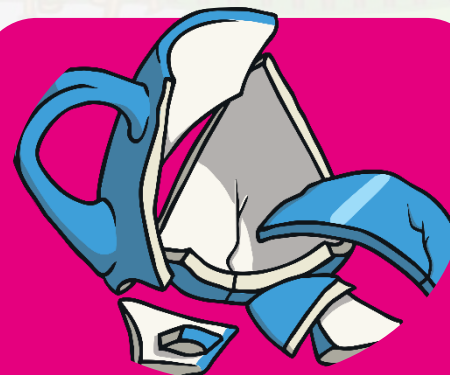
The spelling pattern 'ea' usually makes the sound /ee/ (as in the word 'pea') but here the 'ea' spelling pattern is making the sound /ay/.



steak



great



break

The Sound /oo/ Spelt 'o'

The letter 'o' usually makes the phoneme /ɔ/ (as in the word 'orange') but here the letter 'o' is making the sound /oo/.



move



prove



improve

The Sound /sh/ Spelt 's'

The letter 's' usually makes the sound /s/ (like in the word **socks**) but here the letter 's' is making the sound /sh/.

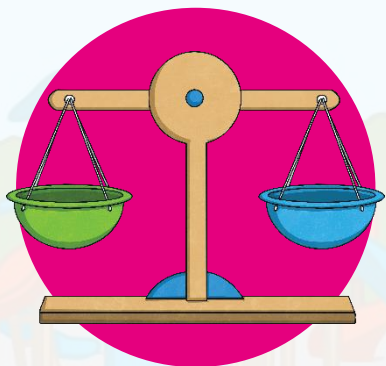


sure



sugar

Be Careful!



even

The word **even** is a tricky word because...

The sound /ee/ is made with split digraph 'e-e' which usually comes in the middle or end of a word, but here it is at the **start**.



eye

The word **eye** is a tricky word because...

The sound /igh/ can be spelt with 'ie' as in pie, 'y' as in sky, 'igh' as in night but here the sound /igh/ is being made with 'eye'.

Here are this week's spellings to practise.

even

break

steak

great

move

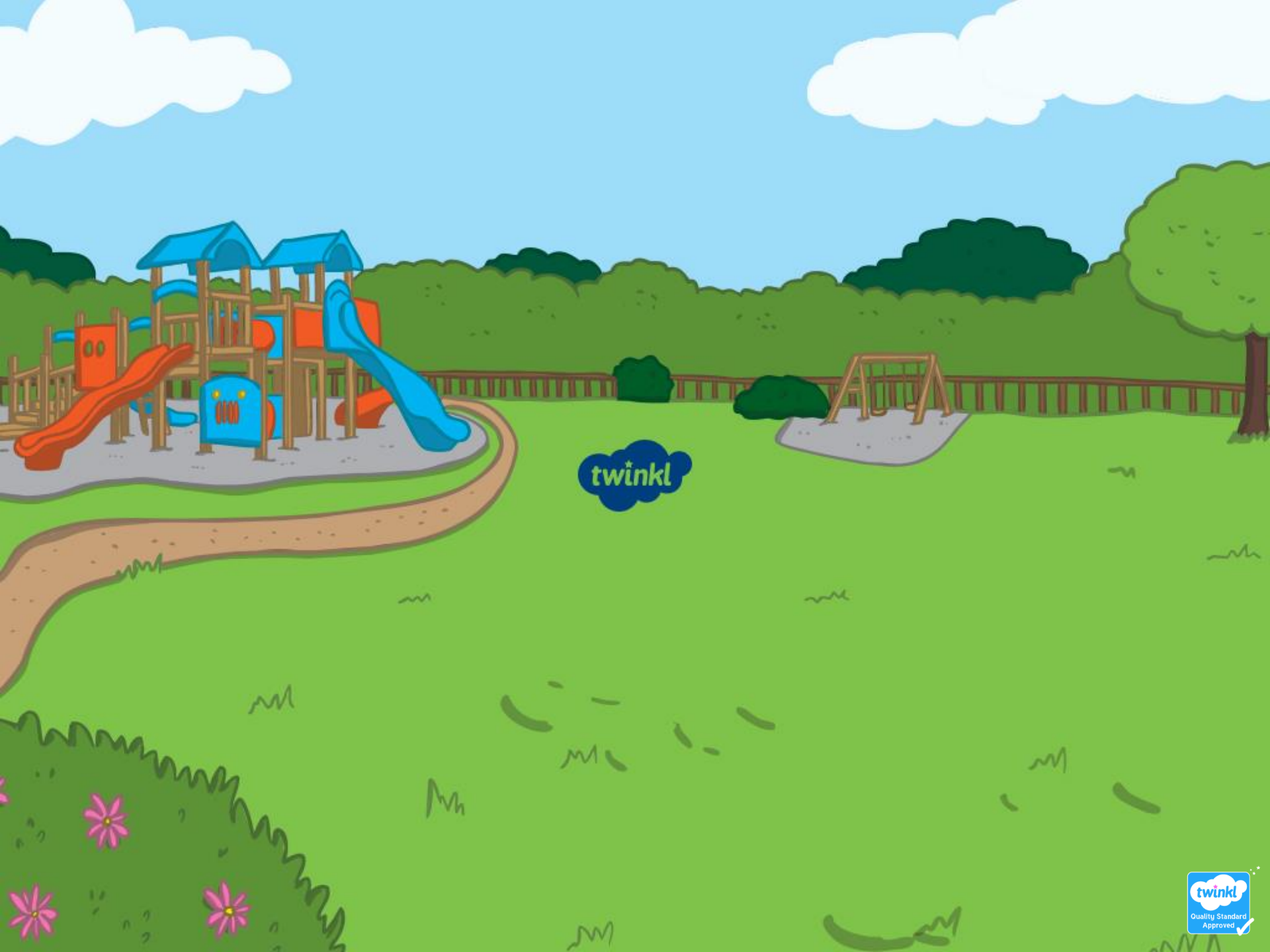
prove

improve

sure

sugar

eye



twinkl